



## Bishops Park Road, SW6

£634 Per week

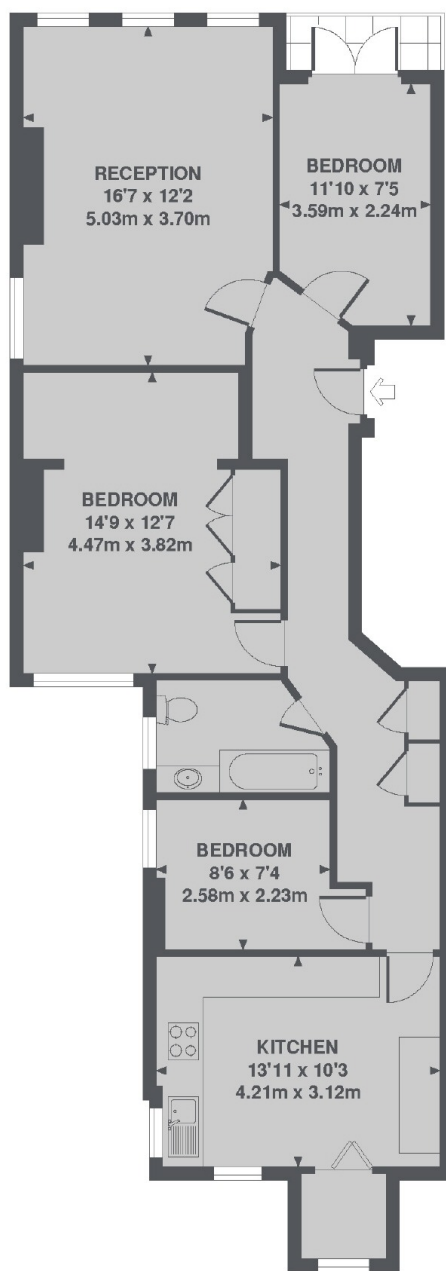
A newly refurbished and spacious three double bedroom first floor apartment forming part of this elegant red brick block. The property has just been recently refurbished throughout.

Located on one of Fulham's most desirable roads with direct views over Bishops Park Tennis Centre and a short walk to the river Thames.

### Features

Newly Refurbished  
Brand New Carpets  
Three Double Bedrooms  
Spacious Reception  
Large Separate Kitchen  
Close To Bishops Park

# Bishops Park Road, London, SW6



1ST FLOOR

TOTAL APPROX. FLOOR AREA 886 SQ. FT. (82.4 SQ. M.)