



Delaford Street, SW6

£750,000

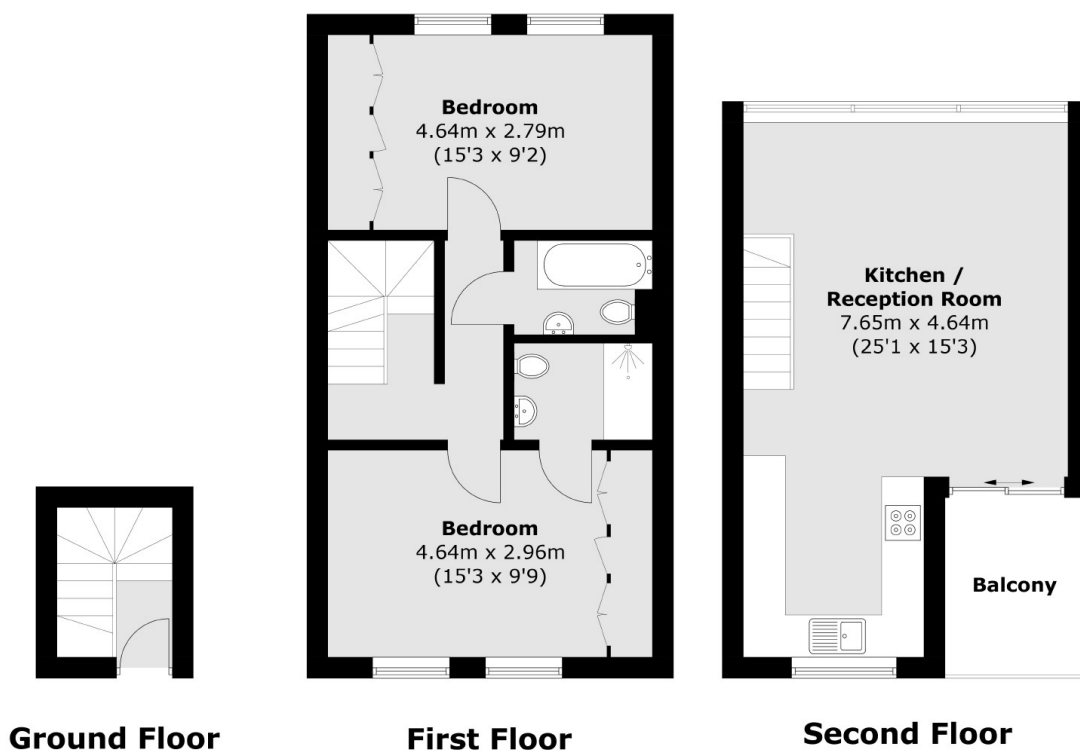
An immaculately finished top floor two double bedroom flat that has been finished to the highest standard throughout. The top floor consists of a large open plan kitchen living area with direct access out onto a roof terrace. The flat further benefits from two bathrooms.

Ideally located within a short distance from all the local amenities of Fulham Broadway and West Brompton, both District line and Overground line 0.5 mi away.

Features

Beautifully Refurbished
Open Plan Kitchen/Living
Period Conversion
Two Bathrooms
Private Roof Terrace
Top Floor

Delaford Street, London, SW6



Total area (approx.): 75.3 sq. m (810.4 sq. ft)
Balcony: 5.1 sq. m (54.9 sq. ft)