



## North End Road, SW6

£496 Per week

Finished to the highest specification is this stunning one bedroom apartment offering a beautifully designed kitchen including a peninsula with breakfast bar, reception with private balcony off and luxurious bathroom.

Located extremely conveniently for local shops, restaurants, cafés, Waitrose Supermarket and just a short walk from Fulham Broadway underground station offering links across London via the District Line.

### Features

- One Bedroom Apartment
- Finished To High Standard
- Large Reception
- Attractive Kitchen
- Private Balcony
- Fulham Broadway



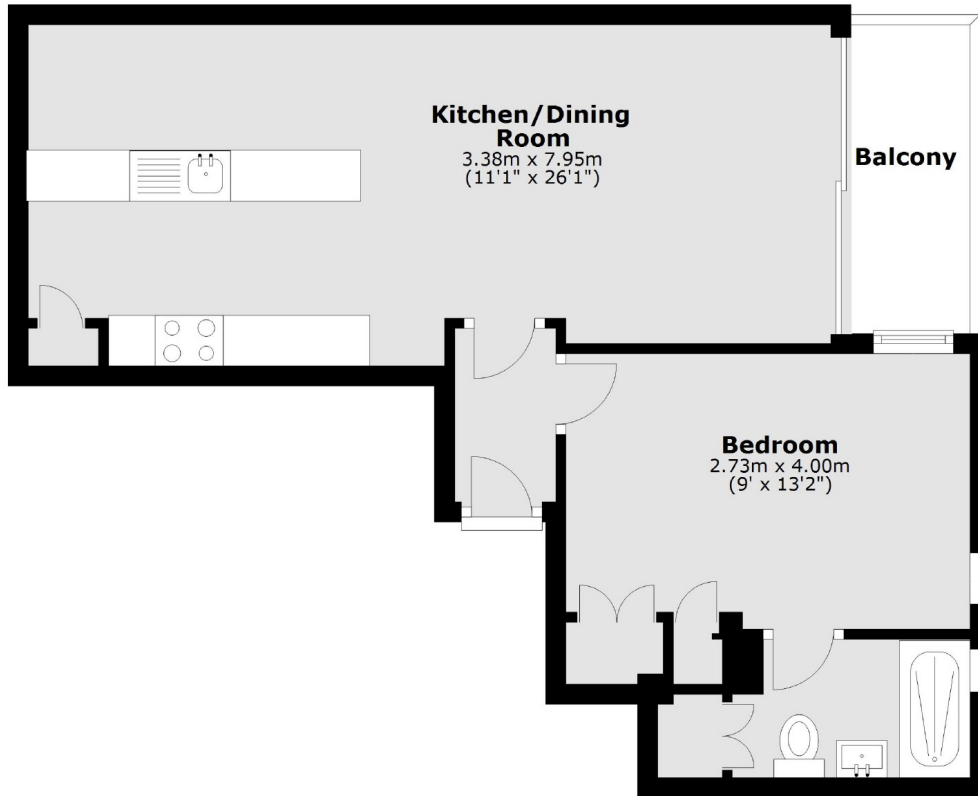
**North End Road, SW6**





# North End Road, London, SW6

## First Floor



Main area: Approx. 44.0 sq. metres (473.7 sq. feet)  
Plus balconies, approx. 4.0 sq. metres (43.5 sq. feet)