



Lillie Road, SW6

£575,000

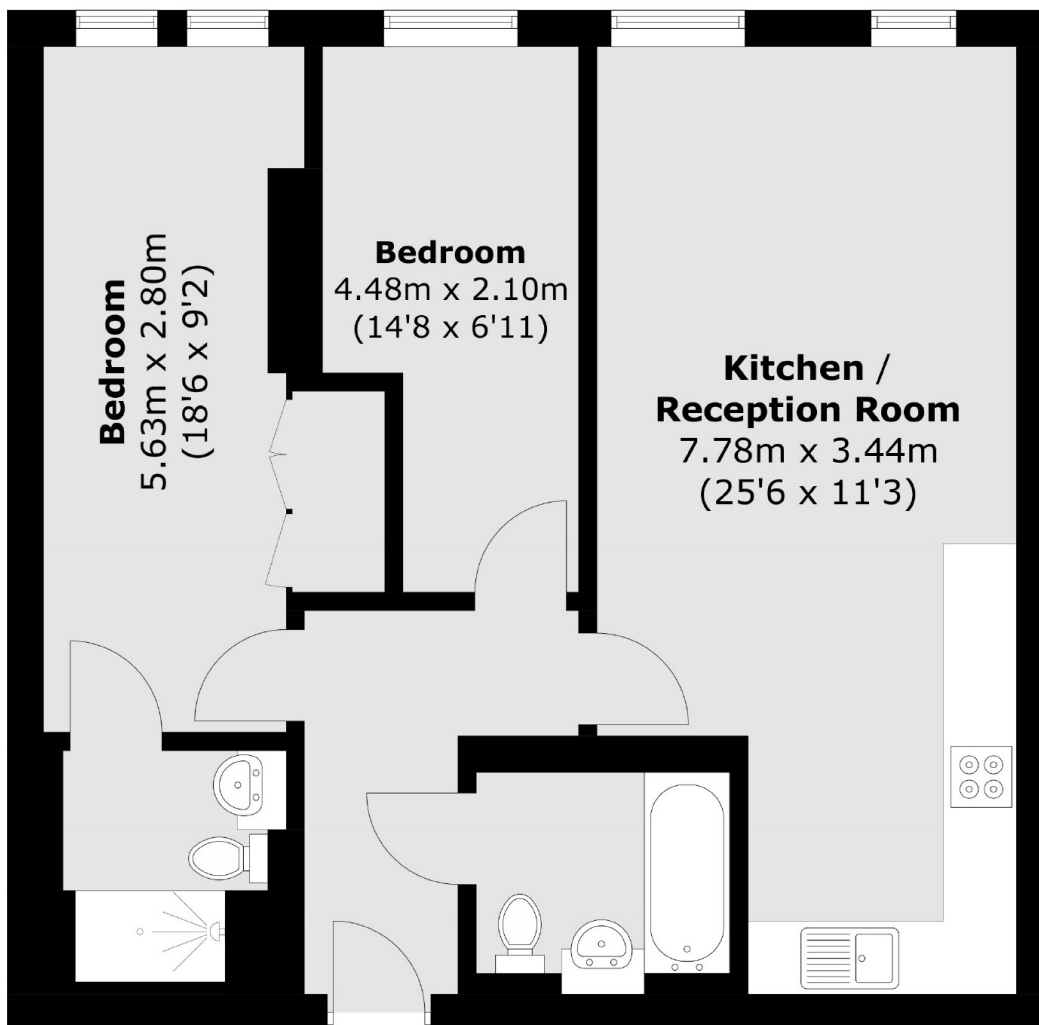
A contemporary two double bedroom lateral flat located in the Ariana Apartments. The two double bedrooms are complimented by an open-plan kitchen living room and two bathrooms.

Ariana apartments is enviably located close to Fulham Broadway station and West Brompton tube, as well as the overground station.

Features

- Two Double Bedrooms
- High Specification
- Video Phone Entry System
- Two Bathrooms
- Lift
- West Brompton Station

Lillie Road, London, SW6



Total area (approx.): 62.2sq. m (669.5 sq. ft)