



Musgrave Crescent, SW6

£2,100,000

A perfectly refurbished family home enviably located within the Moore Park Estate with direct views across Eel Brook Common.

Musgrave Crescent is a sought after location, moments away from Eel Brook Common and the amenities of Fulham Broadway and Parsons Green. The Kings Road is a short walk away.

Features

Three Double Bedrooms
Meticulously Refurbished
Direct Views Over The
Common
Abundance Of Living Space
Parsons Green
Family Home



Musgrave Crescent, SW6

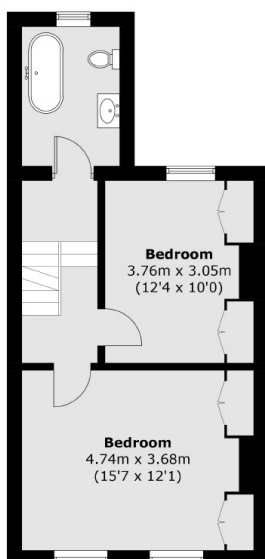
The house is best accessed through the raised ground floor entrance which leads straight into a spacious double reception room. There is also a walk in wardrobe / study on this level.

The lower ground floor offers three distinctive spaces a beautiful fully integrated kitchen leading out to a low maintenance garden via bi fold doors that creates a fantastic inside outside living feel. This floor also consists of a dining room and an additional family snug room. The house further benefits from a W.C on this level.

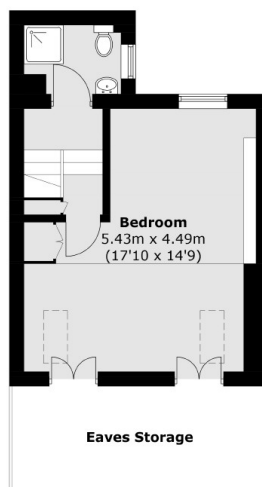
The upper floors consist of three evenly sized bedrooms and two modern bathrooms.



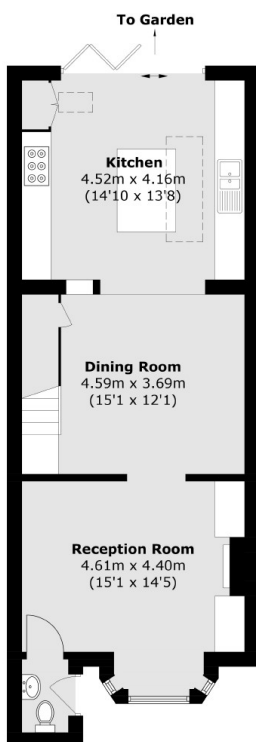
Musgrave Crescent, London, SW6



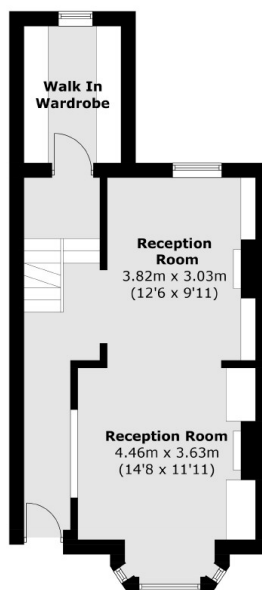
First Floor



Second Floor



Lower Ground Floor



Ground Floor

Total area (approx.): 170.9 sq. m (1,839.5 sq. ft)
(Excluding Eaves)