



Fulham Road, SW6

£507 Per week

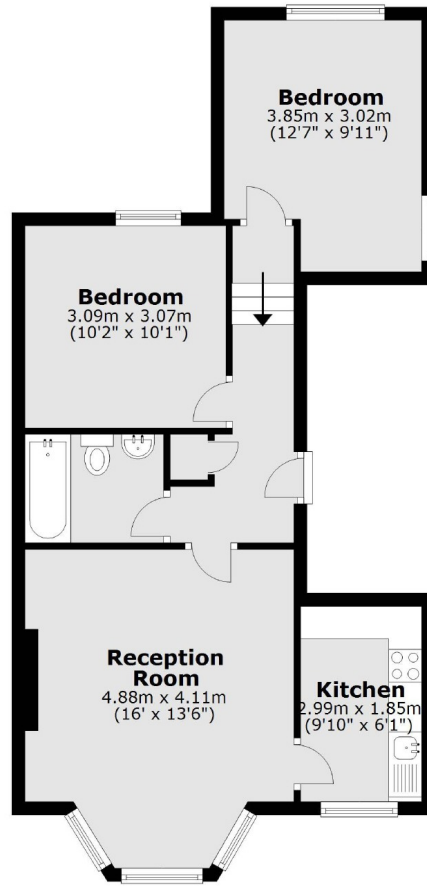
A beautifully presented first floor apartment located on the popular Fulham Road. Offering bright and spacious accommodation throughout the property boasts a large reception room, separate kitchen, two double bedrooms and a modern bathroom.

The property is ideally located for the amenities on Fulham Road, green spaces of Bishops Park and transport links of Parsons Green.

Features

- Period Conversion
- First Floor Apartment
- Two Double Bedrooms
- Light and Airy
- Bishops Park
- Fulham Road

Fulham Road, London, SW6



Total area: approx. 55.0 sq. metres (591.8 sq. feet)