



Dawes Road, SW6

£500,000

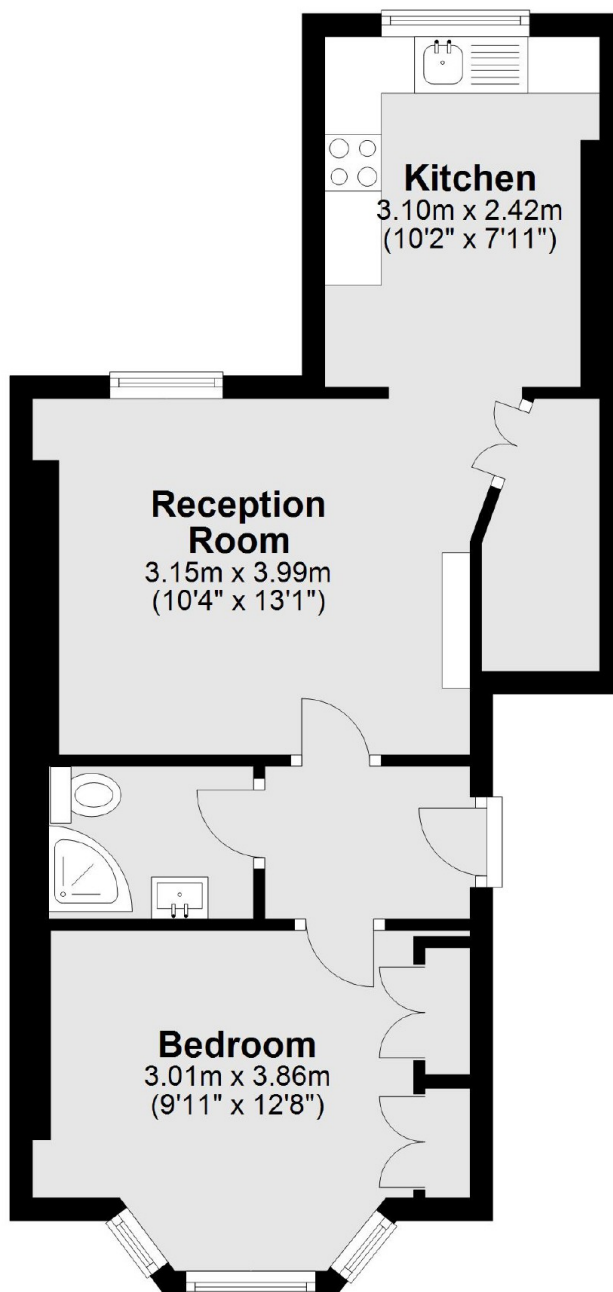
A well configured, raised ground floor one bedroom apartment in a Victorian conversion. The property has been tastefully renovated throughout and offers high ceilings, a separate kitchen and an abundance of storage.

Dawes Road is ideally located in between Parsons Green and Fulham Broadway. The flat is very close to a large Waitrose shop, Whole Foods, various gyms (F45, David Lloyds, PureGym) and parks (Eel Brook, Normand Park and Bishops Park).

Features

- No Chain
- Share Of Freehold
- Raised Ground Floor
- One Bedroom
- Excellent Location
- High Ceilings

Dawes Road, London, SW6



Total area: approx. 39.0 sq. metres (419.5 sq. feet)