

Park Street, SW6

£500,000

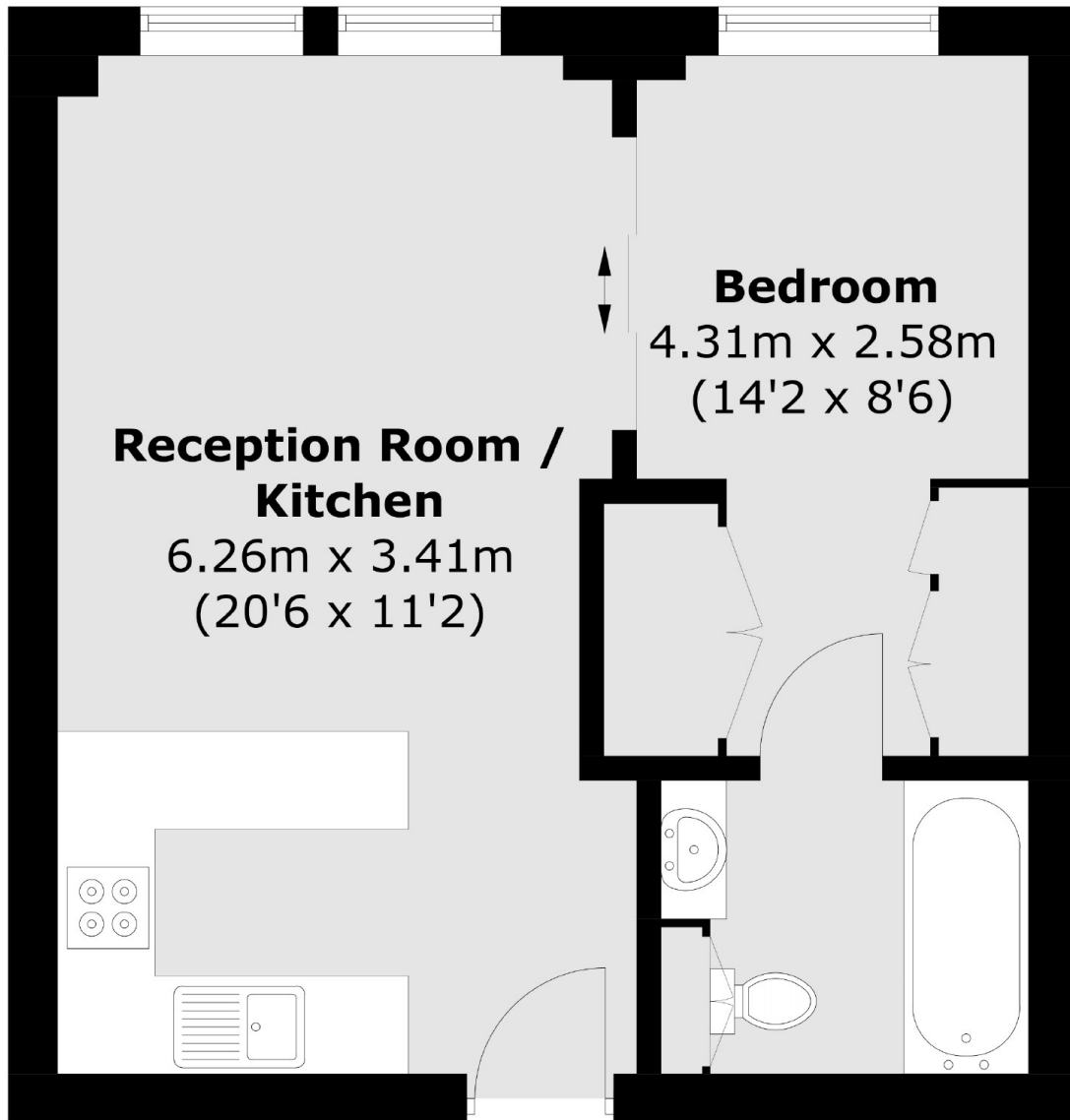
A well maintained, third floor Manhattan apartment in Chelsea Creek. The property also has access to the amenities within the development which include a spa with gym, swimming pool and a 24/7 concierge.

Located within this sought after development, the property is next to Imperial Wharf Station and is within close proximity to Fulham Broadway. The Kings Road and The Rivers Thames are only a short walk away.

Features

- Manhattan Apartment
- Well Finished Throughout
- Concierge
- Gym
- Swimming Pool
- No Chain

**Park Street,
London, SW6**



Total area (approx.): 37.3 sq. m (401.5 sq. ft)