



William Morris Way, SW6

£995,000

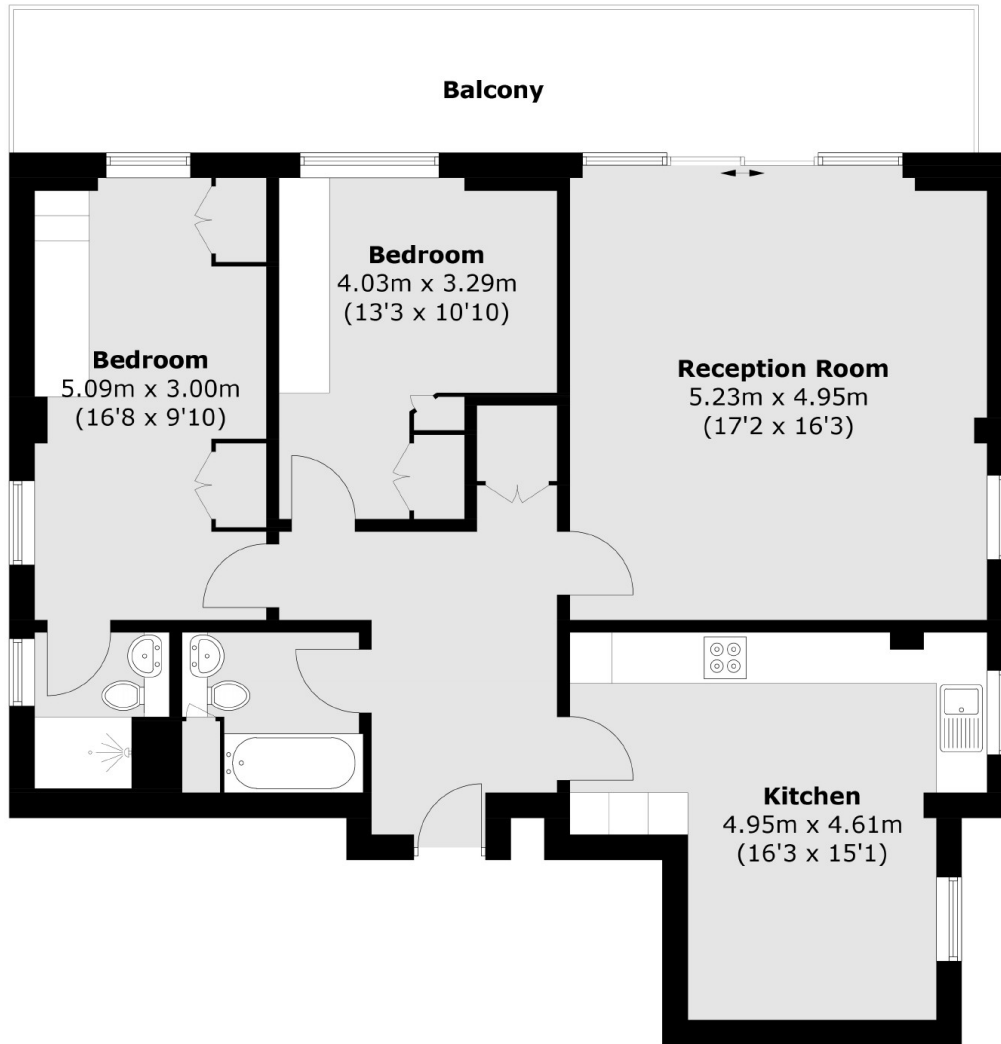
A large two double bedroom lateral flat with enviable direct river views over the Capital. The property is in great condition and has, two bedrooms one en-suite, large reception room with bi-folding doors onto a balcony and a separate modern kitchen dining room. The flat further benefits from a private underground parking space.

Ideally located within a short distance from Imperial Wharf (Overground - 0.3m), the Harbour club, the river and the popular Sands End area of Fulham.

Features

- Two double bedrooms
- Two bathrooms
- Large reception/dining room
- Enviably River Views
- Balcony
- Private Underground Parking

William Morris Way, London, SW6



Total area (approx.): 92.1 sq. m (991.3 sq. ft)
Balcony: 19.4 sq. m (208.8 sq. ft)