



Salisbury Mews, SW6

£450,000

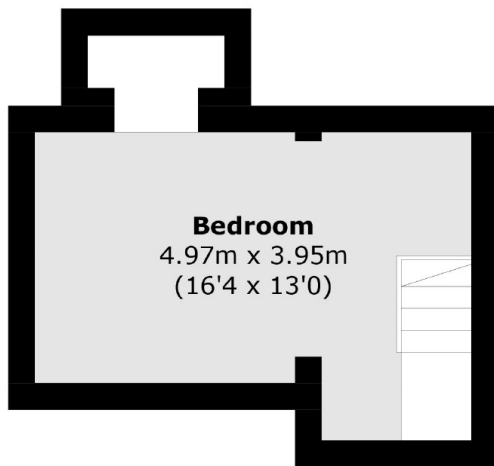
A immaculately finished own front door one bedroom flat set back from Dawes Road. The property is split over two levels offering an abundance of living space with its large open plan kitchen living room.

The property is almost equidistant from the amenities and transport links of both Fulham Broadway and Parsons Green.

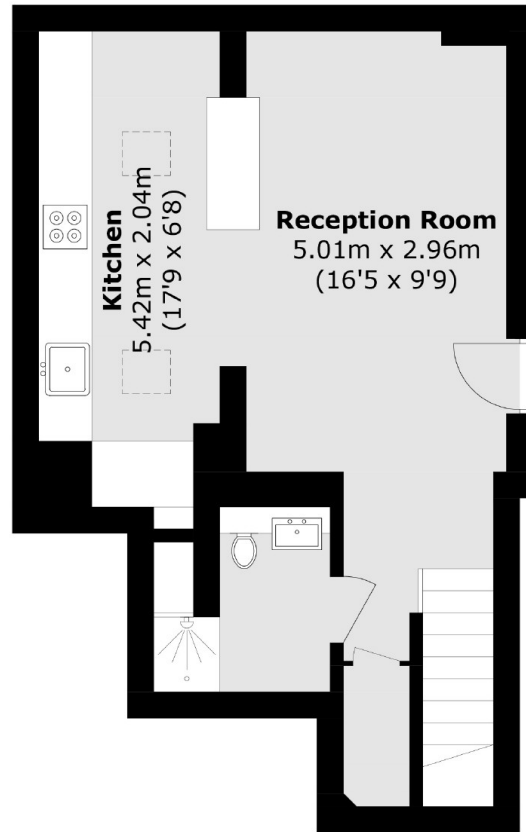
Features

- Split Level
- One Double Bedroom
- Open Plan Kitchen Living
- Immaculately Refurbished
- Own Entrance
- Good Transport Links

Salisbury Mews, London, SW6



Lower Ground Floor



Ground Floor

Total area (approx.): 55.9 sq. m (601.7 sq. ft)