



## Dairy Close, SW6

£625,000

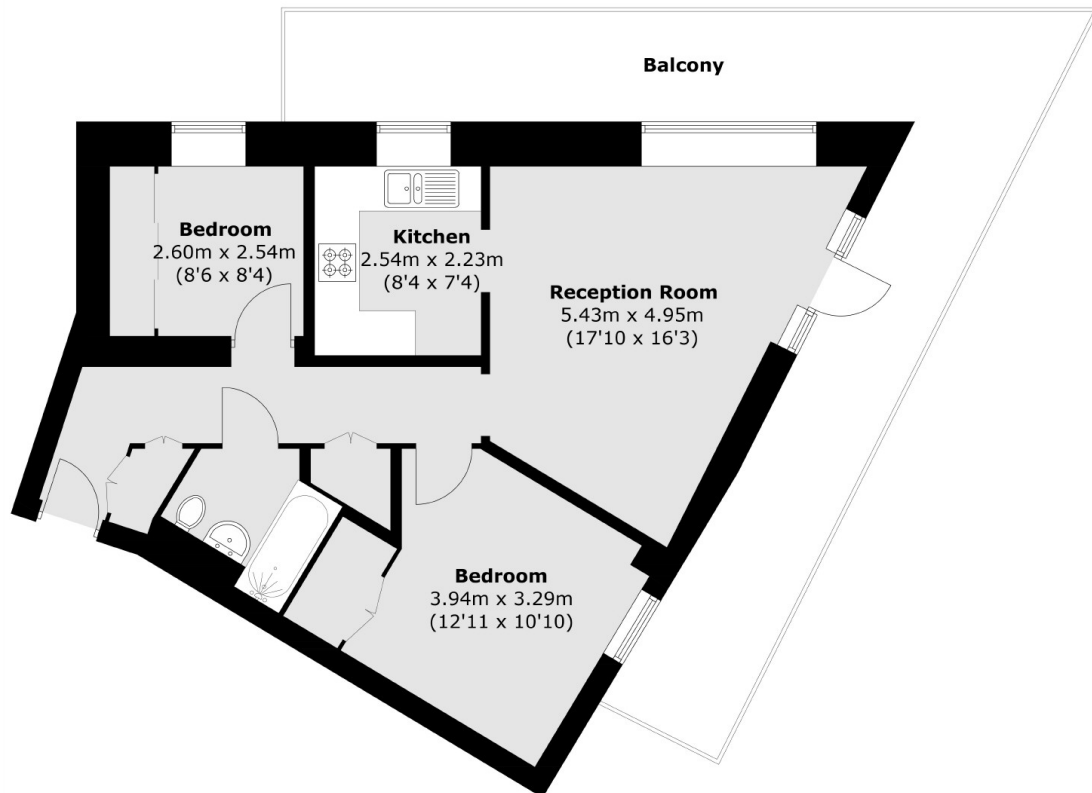
An enviably located two bedroom apartment located in this purpose built development in the heart of Parsons Green. The property compromises of a large reception room, a separate kitchen area and a large wrap around balcony.

Located moments away from the amenities and transport links of Parsons Green.

### Features

- Two Bedrooms
- Wrap Around Balcony
- Sought After Location
- Close To Transport Links
- Lift and Concierge Service
- Parsons Green

# Dairy Close, London, SW6



Total area (approx.): 56.3 sq. m (606.0 sq. ft)  
Balcony: 29.6 sq. m (318.6 sq. ft)