



Lillie Road, SW6

£475,000

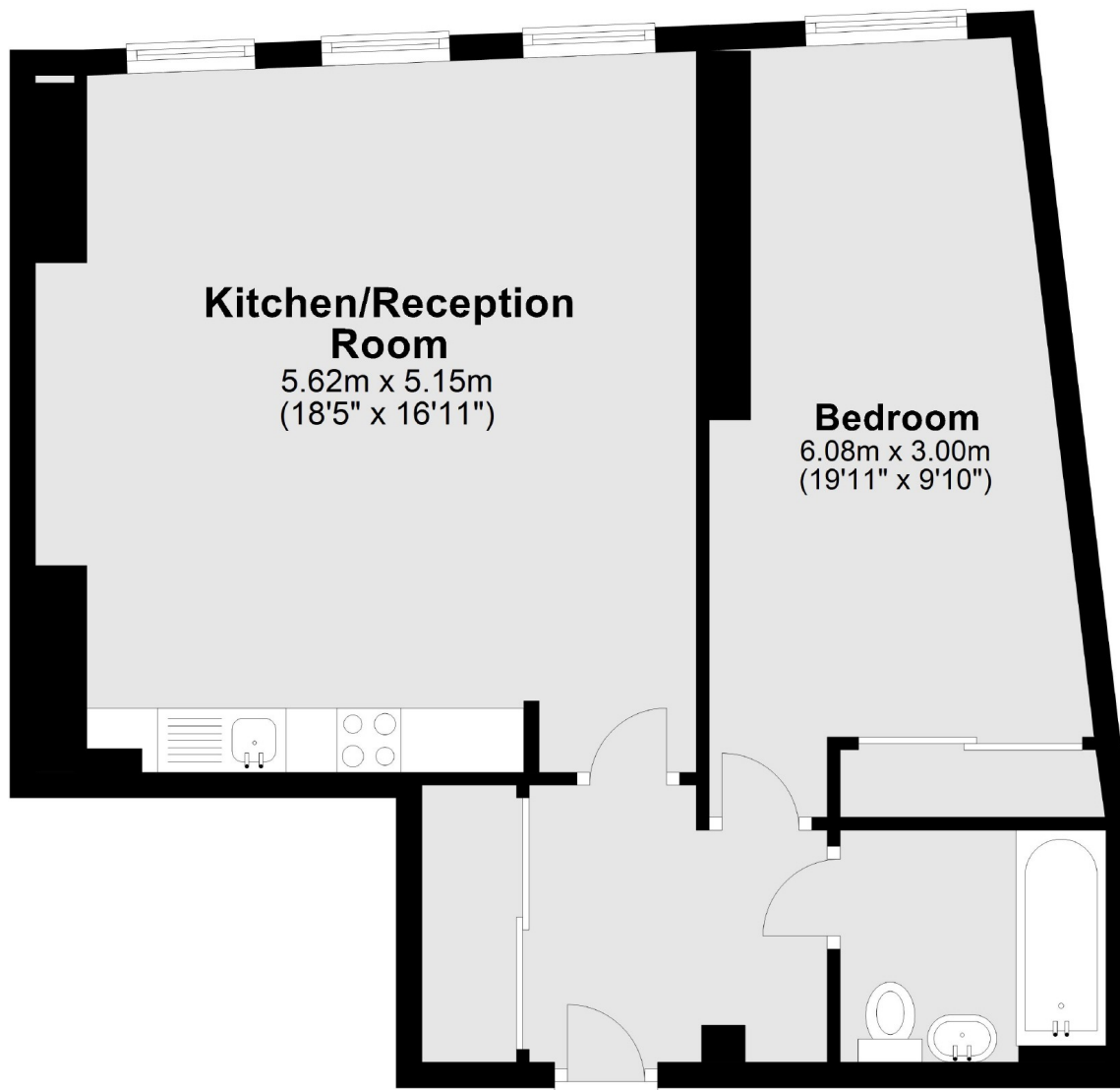
An immaculately finished, larger than usual one double bedroom apartment close to West Bromtpon. The property has a large open plan kitchen living room with fully integrated kitchen. The double bedroom has built in storage in ample space.

The apartments are close to Normand Park and popular spots such as Earls Court and shopping facilities on the Fulham Road. West Brompton, Fulham Broadway and West Kensington station are all close by.

Features

- Well Finished
- New Build
- Open Plan
- Underfloor Heating
- Large Double Bedroom
- Transport Links

Lillie Road, London, SW6



Second Floor

Total area: approx. 56.3 sq. metres (606.0 sq. feet)