



Hildyard Road, SW6

£484 Per week

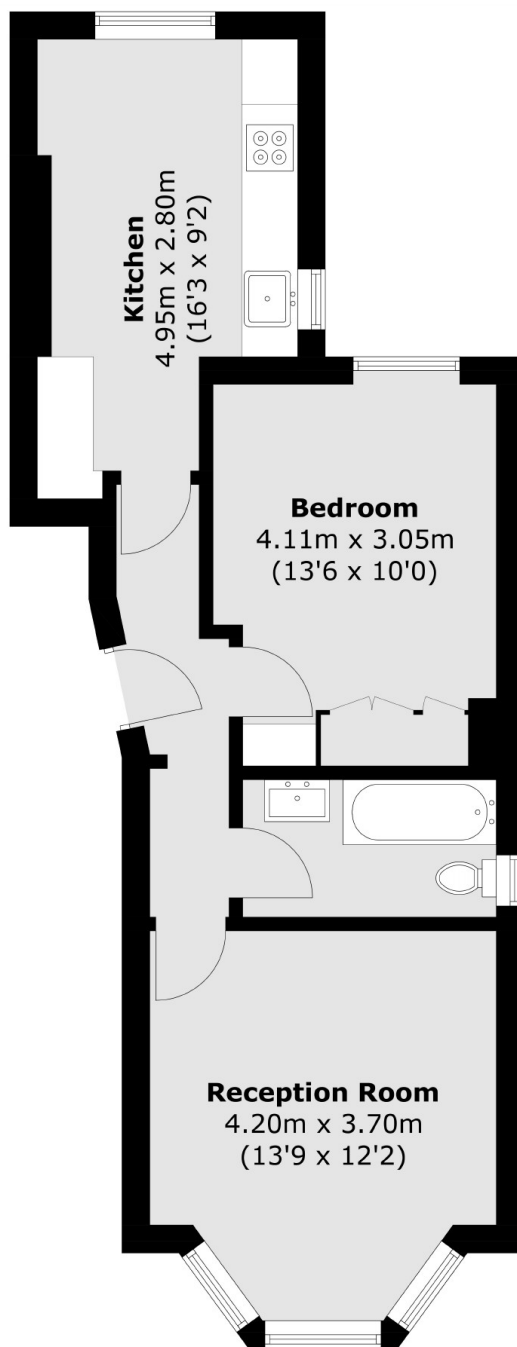
A charming one bedroom apartment on this popular residential road. The property offers a large, bright reception room, double bedroom, separate kitchen and bathroom.

Hildyard Road is perfectly located for the amenities on Old Brompton Road and transport links of West Brompton Station.

Features

- Period Conversion
- Modern Kitchen
- High Ceilings
- One Double Bedroom
- Quiet Residential Road
- Central Location

Hildyard Road, London, SW6



Total area (approx.): 48.8 sq. m (525.3 sq. ft)