



Horder Road, SW6

£1,250,000

A beautifully refurbished three double bedroom period house on a quiet residential street between Munster Village and Parsons Green. The property has a spacious double reception room, with access to a private garden.

Located on a quiet residential street at the preferred end of Munster Village. The house is within close proximity to Bishops Park, Putney Bridge and Parsons Green.

Features

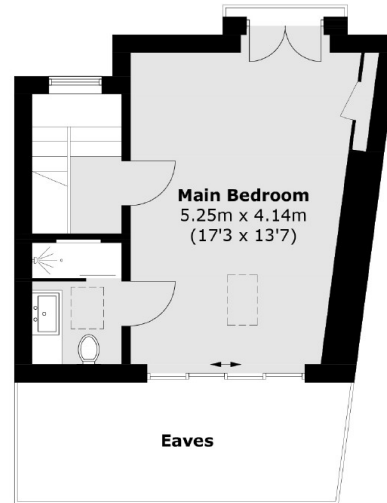
- Three Double Bedrooms
- Sought After Location
- Double Reception Room
- Well Finished Throughout
- Two Bathrooms
- Private Garden



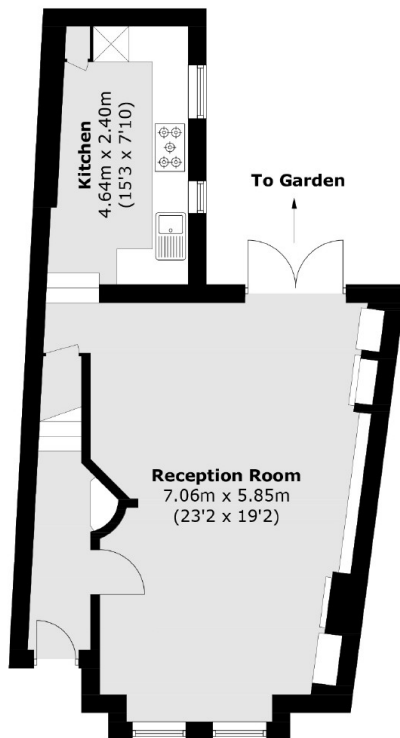
Horder Road, SW6



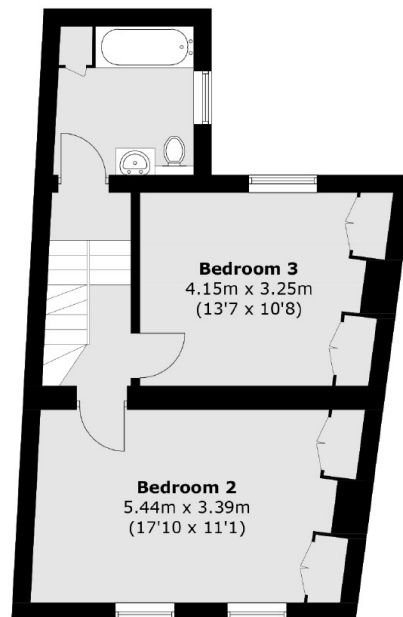
Horder Road, London, SW6



Second Floor



Ground Floor



First Floor

Total area (approx.): 119.9 sq. m (1,290.6 sq. ft)
(Excluding Eaves)