



## Fulham Road, SW6

£599,999

A top floor one bedroom apartment in this premium conversion in the heart of Parsons Green. The apartment has an open plan kitchen living room with door that open onto a south facing roof terrace.

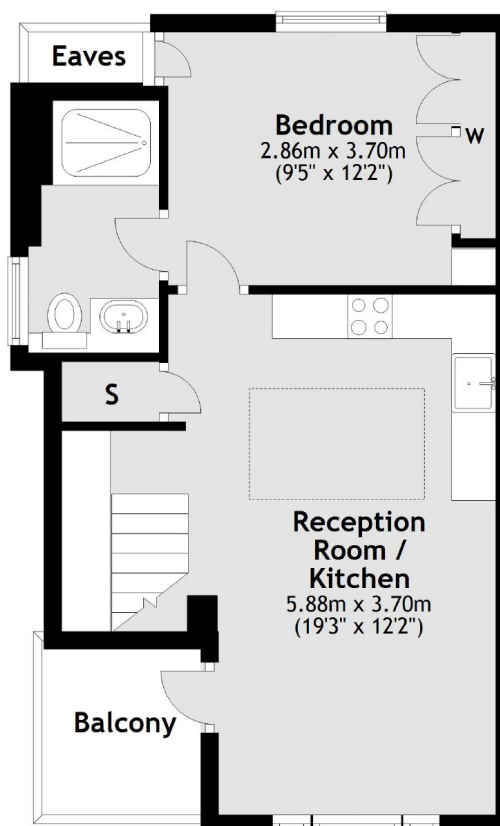
Enviably located within short distance to the amenities and transport links of Parsons Green.

### Features

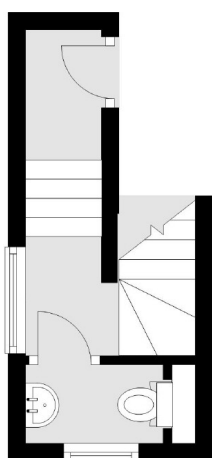
- Top Floor
- South Facing Roof Terrace
- Newly Developed
- Open Plan
- Additional Storage
- Parsons Green

# Fulham Road, London, SW6

## Third Floor



## Second Floor



Main area: Approx. 46.5 sq. metres (500.9 sq. feet)  
Plus balconies, approx. 3.7 sq. metres (40.1 sq. feet)