



## Fulham Road, SW6

£550,000

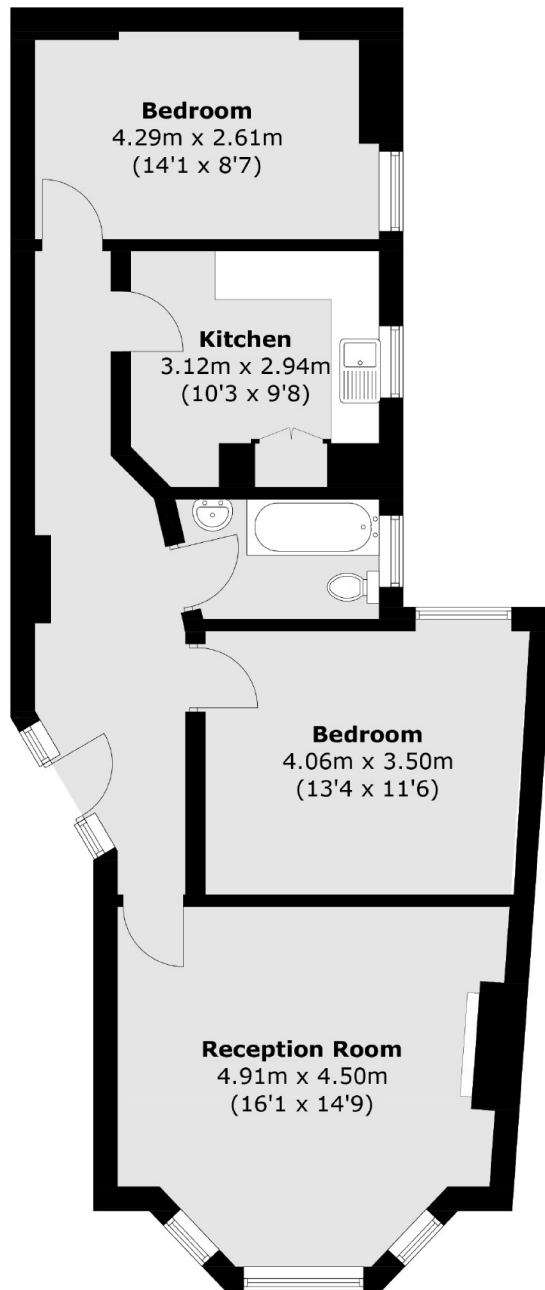
A two double bedroom mansion block apartment located in Parsons Green. The property has a large reception room, with separate kitchen and two equally sized bedrooms.

Located on the Fulham Road, the property is within close proximity to the amenities and transport links of Parsons Green and Putney Bridge.

### Features

Two Double Bedrooms  
Mansion Block Apartment  
Parsons Green  
Well Connected  
Separate Kitchen  
Large Reception Room

# Fulham Road, London, SW6



## Raised Ground Floor

Total area (approx.): 70.7 sq. m (761.0 sq. ft)