



Harwood Road, SW6

£999,999

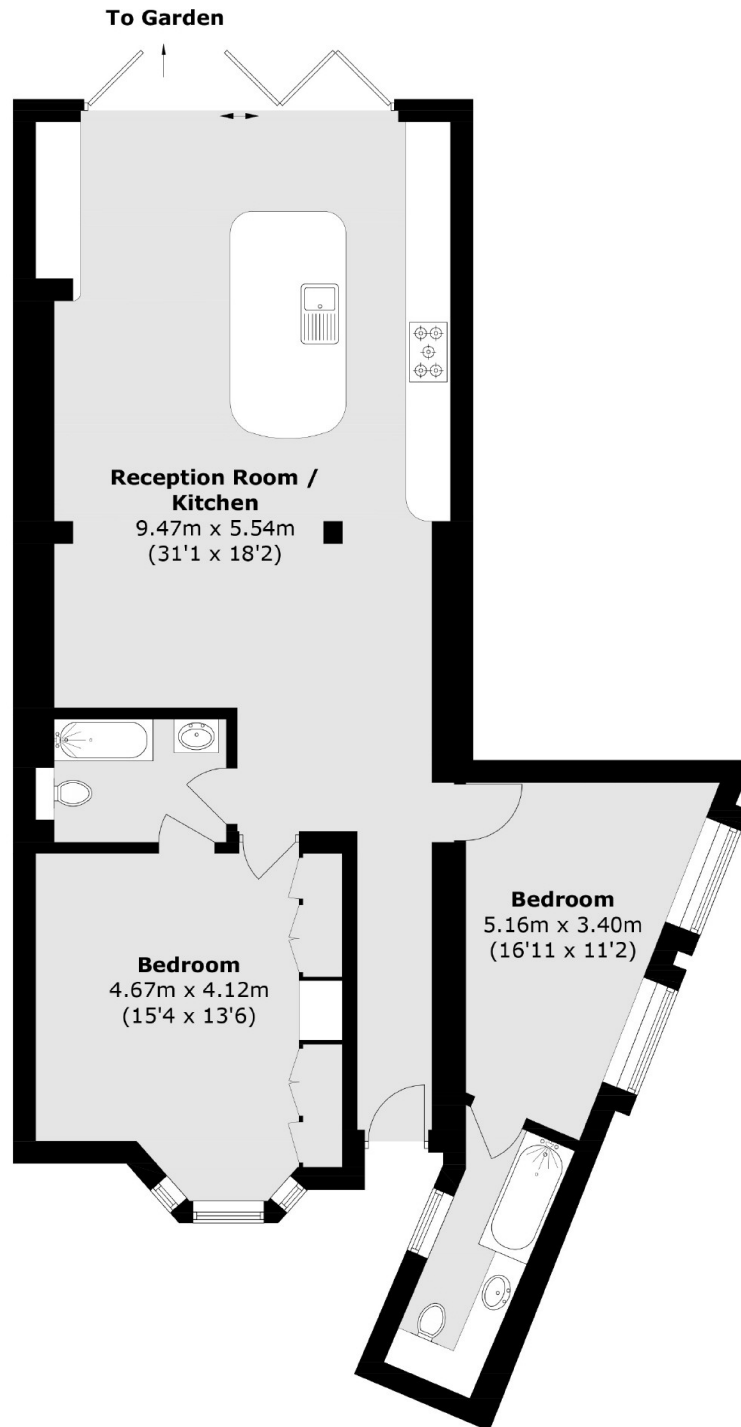
A spacious, two double bedroom ground floor garden flat in the heart of Fulham Broadway. The property has an open plan kitchen living room which is ideal for entertaining, this leads straight out onto a private garden. The property also benefits from two bathrooms.

Located moments away from both Fulham Broadway tube station and Eel Brook Common.

Features

- Own Front Door
- Open Plan Kitchen Living Room
- Two Bathrooms
- Well Finished
- Two Bathrooms
- Private Garden

Harwood Road, London, SW6



Total area (approx.): 95.6 sq. m (1,029.0 sq. ft)