



Bloom Park Road, SW6

£800,000

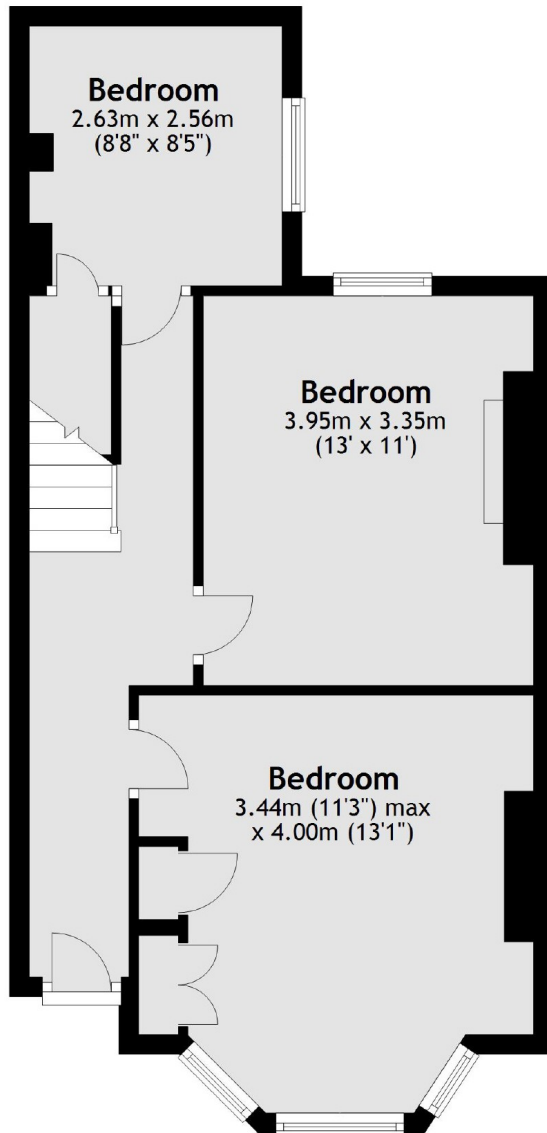
A three double bedroom split level period maisonette in Parsons Green. The property has an open plan kitchen living room, three well proportioned bedrooms and benefits from having its own front door.

Located between the amenities and transport links of Parsons Green, Munster Village and the Dawes Road.

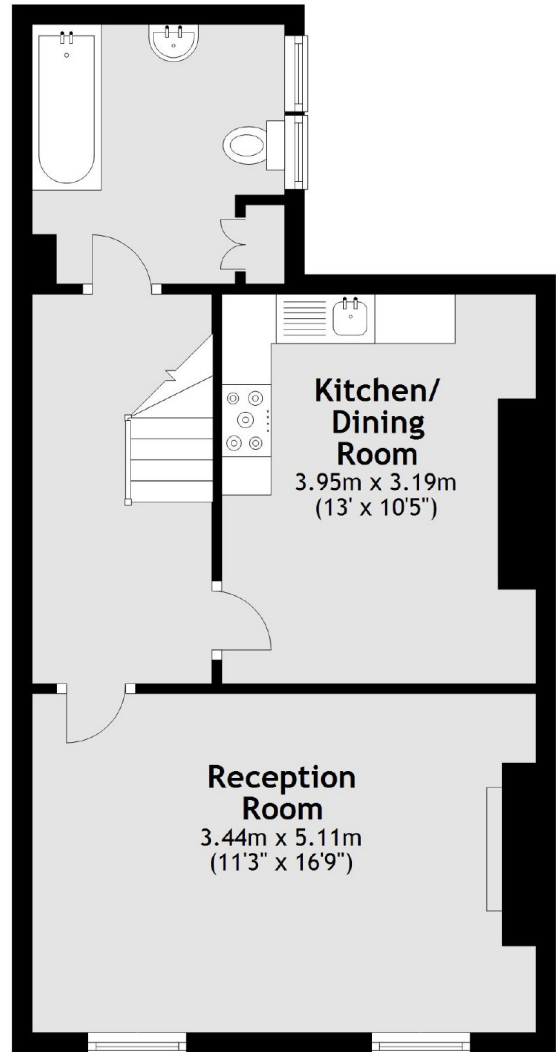
Features

- Three Double Bedrooms
- Split Level Period Conversion
- Own Front Door
- Freehold
- Open Plan Kitchen Living Room
- Sought After Location

Bloom Park Road, London, SW6



Ground Floor



First Floor

Total area: approx. 91.7 sq. metres (986.6 sq. feet)