



Ranelagh Gardens, SW6

£425,000

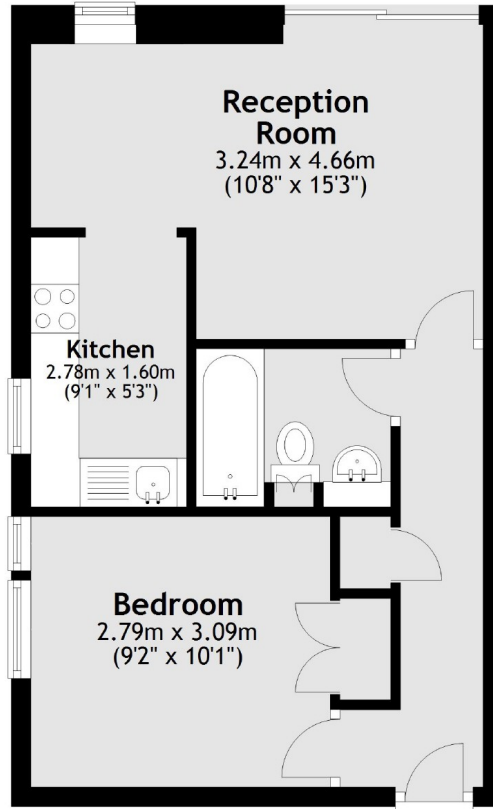
A ground floor one double bedroom apartment on the banks of the River Thames. The property has a reception room with direct access out onto a small patio and into a separate fully integrated kitchen.

Enviably located in a gated complex with direct views of the river. The property is moment away from Putney Bridge Station and close to Parsons Green.

Features

- Designated Parking Space
- Gated Community
- Private Patio
- One Double Bedroom
- Recently Decorated
- River Views

Ranelagh Gardens, London, SW6



Total area: approx. 36.6 sq. metres (394.2 sq. feet)