



## Dawes Road, SW6

£650,000

A recently refurbished two double bedroom conversion flat arranged over the top two floors of this Victorian Building. There is a large open plan kitchen/reception room and a roof terrace.

The property is ideally located in the centre of Fulham. Parsons Green tube and Fulham Broadway tube are less than 10 min walk. The flat is very close to a large Waitrose shop, Whole Foods, a Tesco express, various gyms (F45, David Lloyds, PureGym) and parks (Eel Brook, Normand Park and Bishops Park).

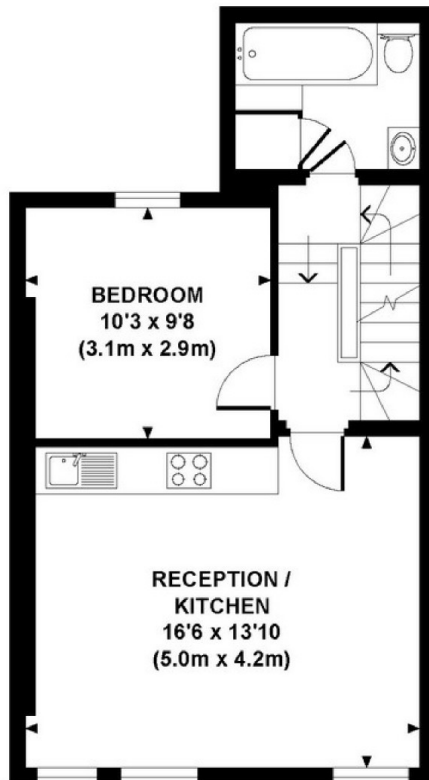
### Features

- Two Double Bedroom
- Duplex Conversion
- Two Bathrooms
- Built In Storage
- High Ceilings
- Share Of Freehold

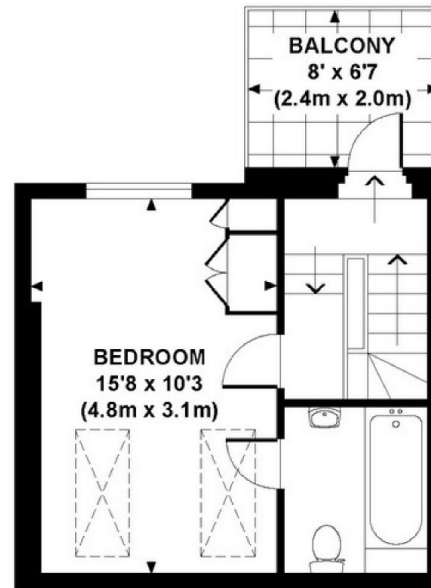
# Dawes Road, London, SW6

## DUPLEX, DAWES ROAD, SW6

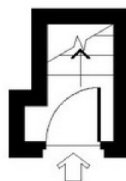
Approx. gross internal area  
715 Sq Ft. / 66.4 Sq M.  
Representation of current layout.  
Not to scale.



FIRST FLOOR



SECOND FLOOR



GROUND FLOOR