



Wandsworth Bridge Road, SW6

£350,000

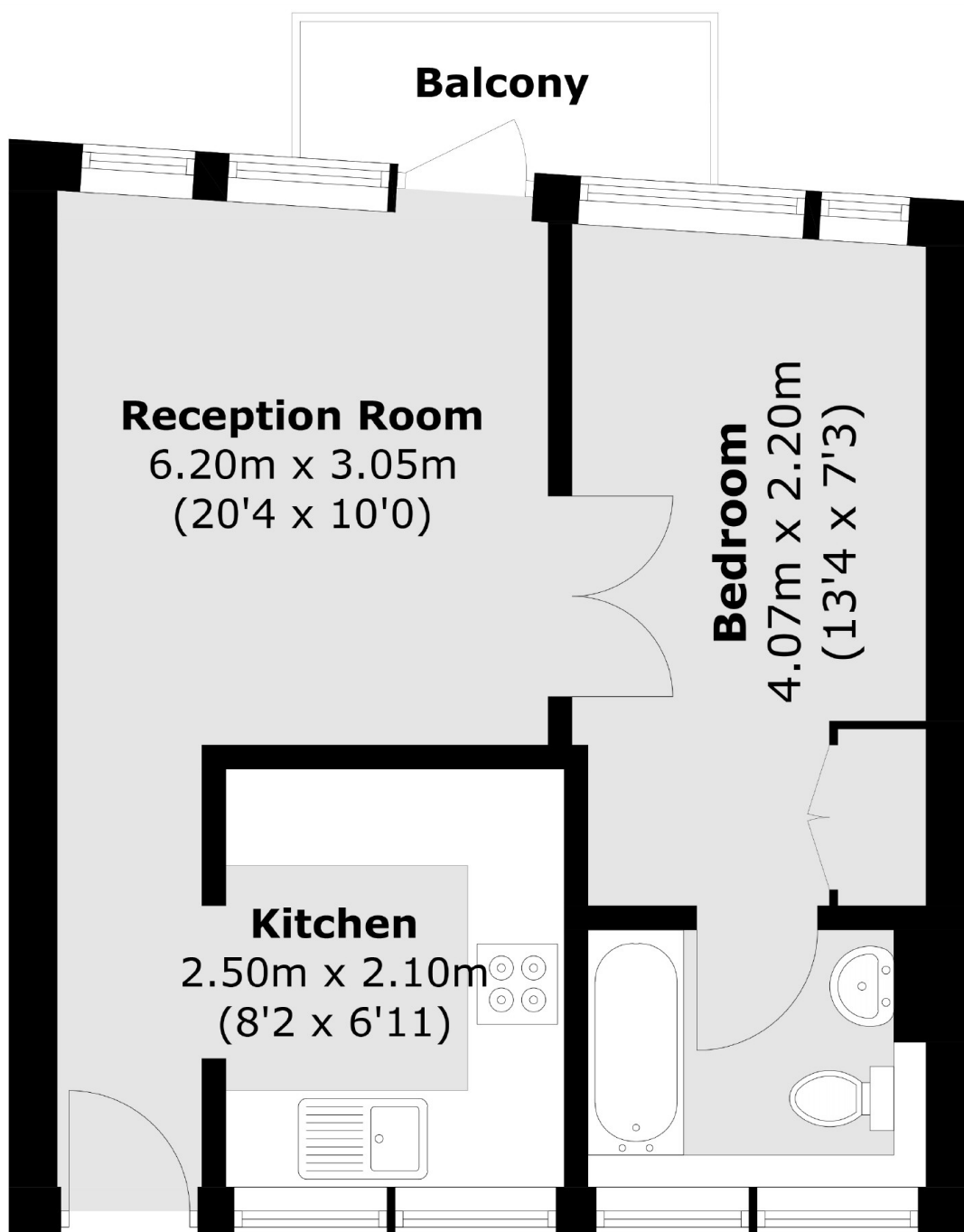
A well configured, one double bedroom purpose built property within a small development just off the Wandsworth Bridge Road. The property has a separate kitchen living room, with the benefit of communal outdoor space.

Located close to the amenities and transport links of Fulham Broadway and Parsons Green.

Features

- Well Configured
- Communal Outdoor Space
- One Double Bedroom
- Close To Transport Links
- Separate Kitchen
- Private Balcony

Wandsworth Bridge Road, London, SW6



Total area (approx.): 32.8 sq. m (353.0 sq. ft)
Balcony: 2.4 sq. m (25.8 sq. ft)