



Burnthwaite Road, SW6

£1,250,000

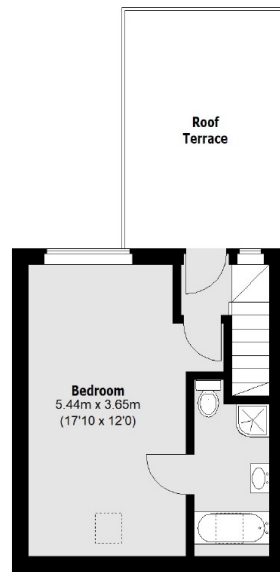
A spacious and well configured four double bedroom family house near to Fulham Broadway. The property has an open plan kitchen dining room which leads straight out onto the garden, the house also benefits from a private roof terrace on the top floor.

The property is well situated on a quiet residential street which is in close proximity to the amenities and transport links of both Fulham Broadway and Parsons Green.

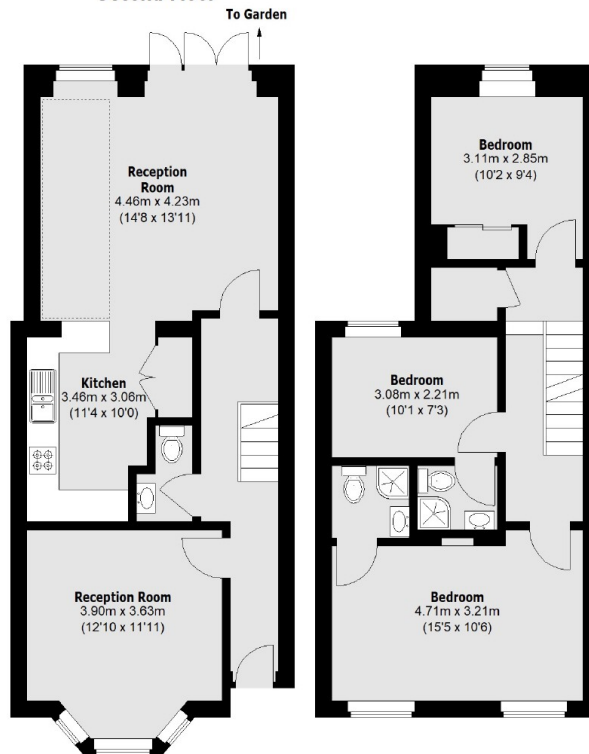
Features

- Four Double Bedrooms
- Open Plan Kitchen
- Separate Living Room
- Three Bathrooms
- Roof Terrace
- Additional W.C.

Burnthwaite Road, London, SW6



Second Floor



Ground Floor

First Floor

Total area (approx.): 124.89 sq. m (1344 Sq. ft)
Roof Terrace : 13.13 sq. m (141 Sq. ft)