



De Morgan Road, SW6

£725,000

A well presented split level four double bedroom, two bathroom apartment located in the popular sands end area of Fulham. The property offers well proportioned accommodation throughout and boasting a mezzanine style kitchen.

Fulham Broadway station and Imperial Wharf station is within walking distance as are the shops, bars and restaurants of Wandsworth Bridge Road.

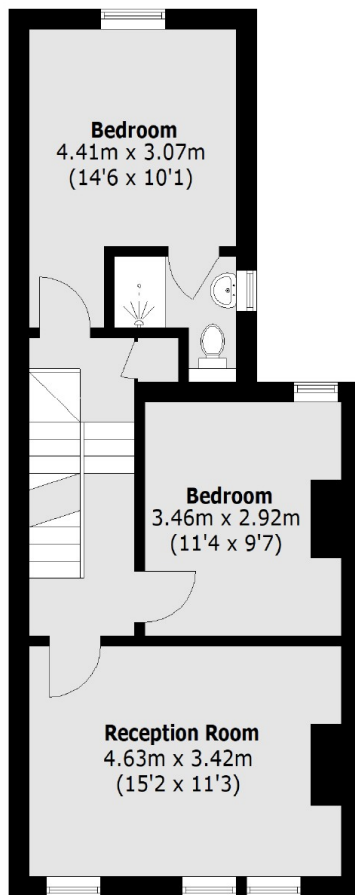
Features

- Split Level Apartment
- Four Double Bedrooms
- Two Bathrooms
- Modern Kitchen
- Spacious Reception
- Imperial Wharf Station

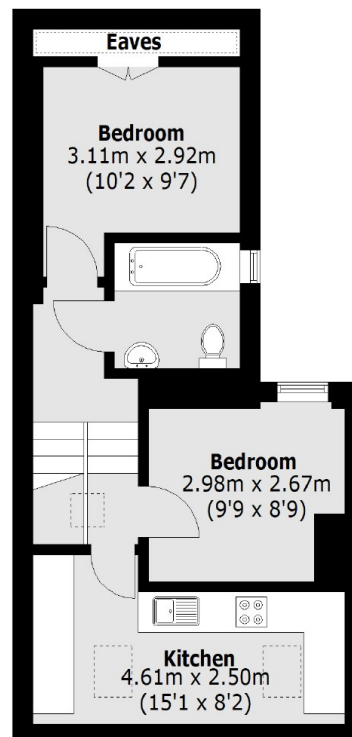
De Morgan Road, London, SW6



Ground Floor



First Floor



Second Floor

Total area (approx.): 87.9 sq. m (946.1 sq. ft)
(Excluding Eaves)