



Woodfield Road, W5

£719,950

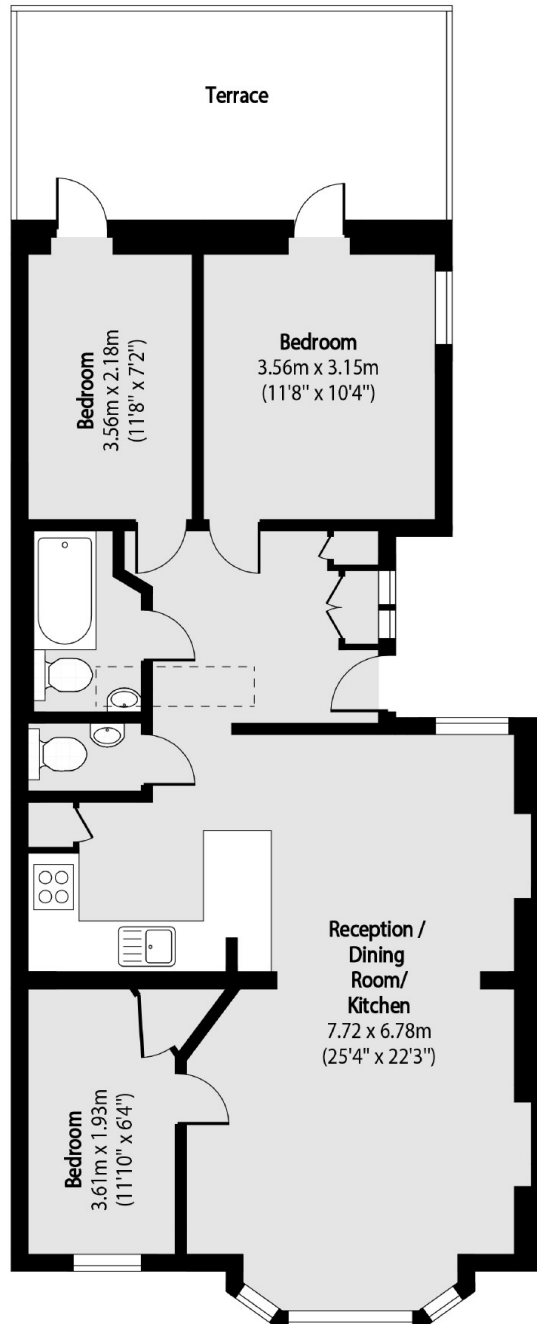
Occupying the entirety of the first floor is this three double bedroom apartment with an additional WC, private balcony and private garden. With nearly 900sq.ft of living space, own entrance, off street parking and no onward chain it is readily available to move in and enjoy.

Located on a prime residential street between Ealing Broadway and the sought after Pitshanger Lane area with numerous excellent local schools close by including St Gregory's Primary, Montpelier Primary and North Ealing Primary.

Features

- Three Bedrooms
- First Floor
- Private Terrace
- Private Garden
- Share Of Freehold
- No Onward Chain

Woodfield Road,
London, W5



Total area (approx): 83.33 sq m (897 sq. ft)

Terrace total area (approx): 16.25 sq m (175 sq. ft)

Dexters

Ealing
2 New Ealing Broadway
London
W5 2NU
Sales
020 8810 0909

Energy Rating: D. We aim to make our particulars both accurate and reliable. However they are not guaranteed; nor do they form part of an offer or contract. If you require clarification on any points then please contact us, especially if you're traveling some distance to view. Please note that appliances and heating systems have not been tested and therefore no warranties can be given as to their good working order.

 **RICS** | Regulated
Estate Agent
and Letting Agent

[dexters.co.uk](https://www.dexters.co.uk)