

Manor Road, W13

£575,000

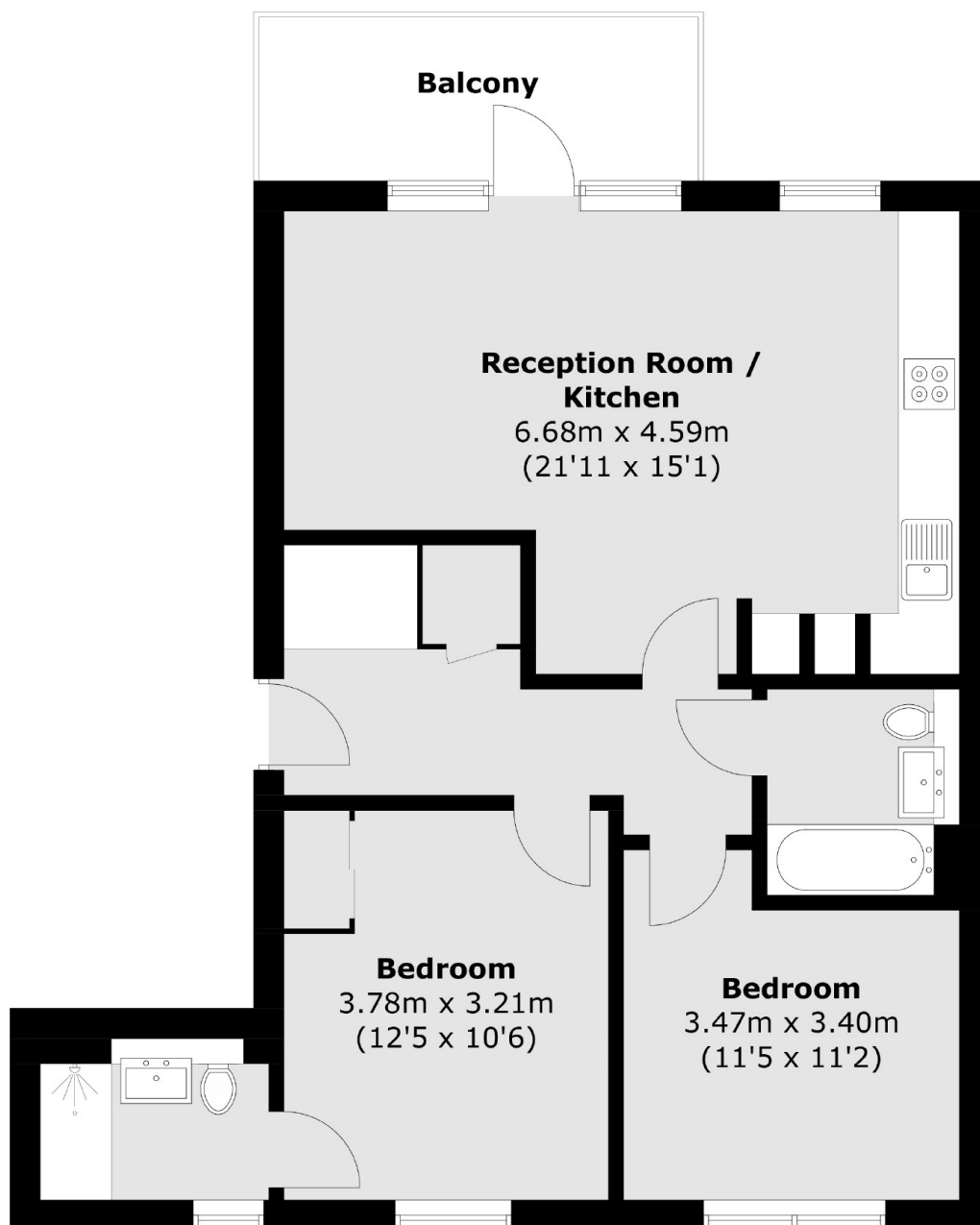
This two double bedroom apartment occupies an enviable position in this modern, gated development with private balcony. Overlooking Drayton Green the property has two bathrooms and a very large kitchen/living room.

Located close to the Waitrose superstore and the West Ealing Crossrail station. Perfectly located for families with Drayton Manor School and St Johns Primary.

Features

- Two Double Bedrooms
- Two Bathrooms
- Lift Access
- Private Balcony
- Long Lease
- No Onward Chain

Manor Road, London, W13



Total area (approx.): 69.6 sq. m (749.2 sq. ft)
Balcony area : 7.0 sq. m (75.3 sq. ft)

Dexters

Ealing
2 New Ealing Broadway
London
W5 2NU
Sales
020 8810 0909

Energy Rating: B. We aim to make our particulars both accurate and reliable. However they are not guaranteed; nor do they form part of an offer or contract. If you require clarification on any points then please contact us, especially if you're traveling some distance to view. Please note that appliances and heating systems have not been tested and therefore no warranties can be given as to their good working order.

 **RICS** | Regulated
Estate Agent
and Letting Agent

[dexters.co.uk](https://www.dexters.co.uk)