



## Inglis Road, W5

£670 Per week

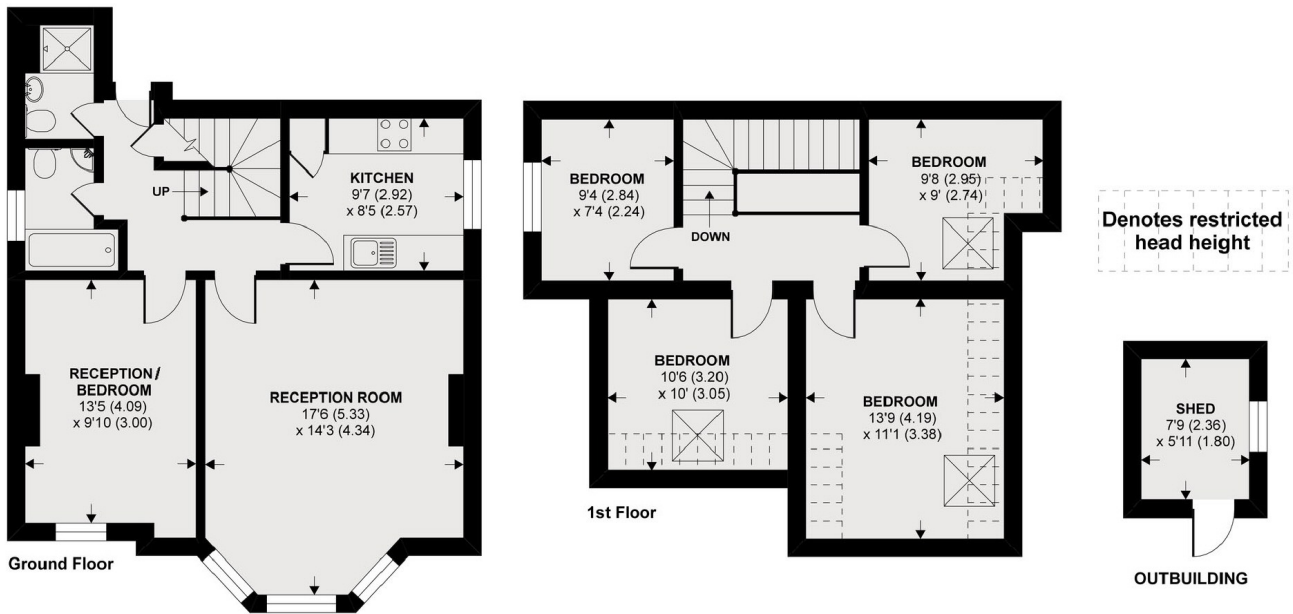
A versatile four/five bedroom apartment offering flexibility to suit the occupiers needs. The property has been recently decorated and benefits from two bathrooms, allocated off-street parking and a private garden making it the ideal family home.

Inglis Road is just moments from both Ealing Common (District and Piccadilly line) and Ealing Broadway stations (District line, Central line and TFL & National Rail lines).

### Features

- Flexible Layout
- Duplex Apartment
- Two New Bathrooms
- Modern Finish
- Off-Street Parking
- Private Rear Garden

# Inglis Road, London, W5



APPROX FLOOR AREA 1125 SQ.FT 104.5 SQ.M (INCLUDES RESTRICTED HEAD HEIGHT)

OUTBUILDING APPROX FLOOR AREA 47 SQ.FT 4.3 SQ.M

Copyright nichecom.co.uk 2020 REF : 574005