



**The Park, W5**

**£1,395,000**

**Dexters**



## The Park, W5

Constructed in 2019 this is three storey semi-detached modern townhouse with four bedrooms and three bathrooms. There is a private rear garden and a terrace off the principal en-suite bedroom, along with allocated parking within a secure, gated compound.

To the ground floor the property has a front reception and large kitchen/dining room to the rear. The wonderful kitchen/family space opens onto the garden with bi-folding doors.

On the first floor there is a principal bedroom to the rear with large en-suite bathroom and South facing terrace. To the front there is another double bedroom which has been connected, currently, to provide a dressing room. This is easily reconfigured to provide the fourth bedroom.

To the top floor there is a family bathroom, alongside a double bedroom. There is an additional double bedroom to the front with a further en-suite shower room.

The Park is located equidistant between both Ealing Broadway and South Ealing for a wide range of transport, shopping and dining options. The open space of Walpole and Lamma Parks, and Ealing Common are close by.

### Features

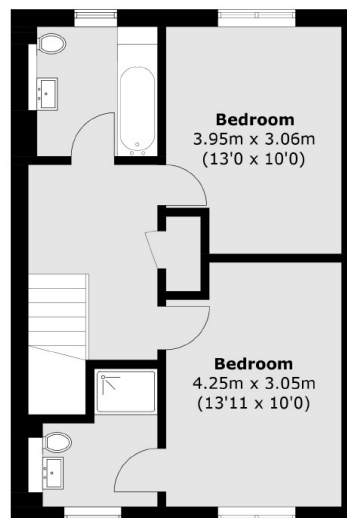
- Four Bedrooms
- Three Bathrooms
- Allocated Parking
- Premium Location
- Close To Transport
- Newly Built (2019)



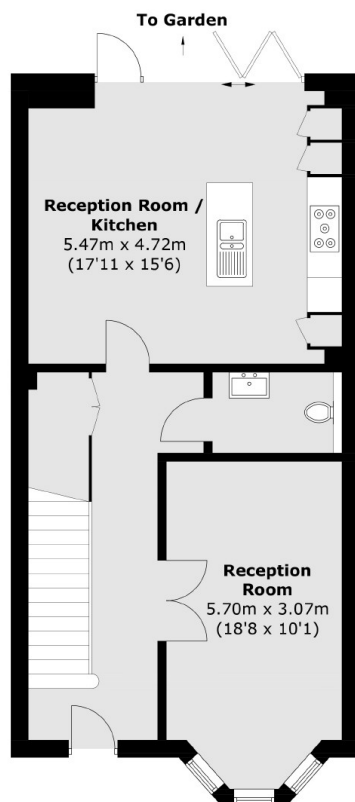




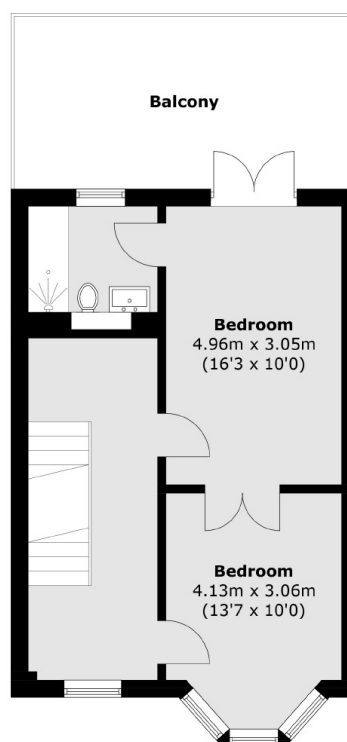
# The Park, London, W5



**Second Floor**



**Ground Floor**



**First Floor**

Total area (approx.): 155.3 sq. m (1,671.6 sq. ft)  
Balcony: 17.8 sq. m (191.6 sq. ft)