



Haven Lane, W5

£619,000

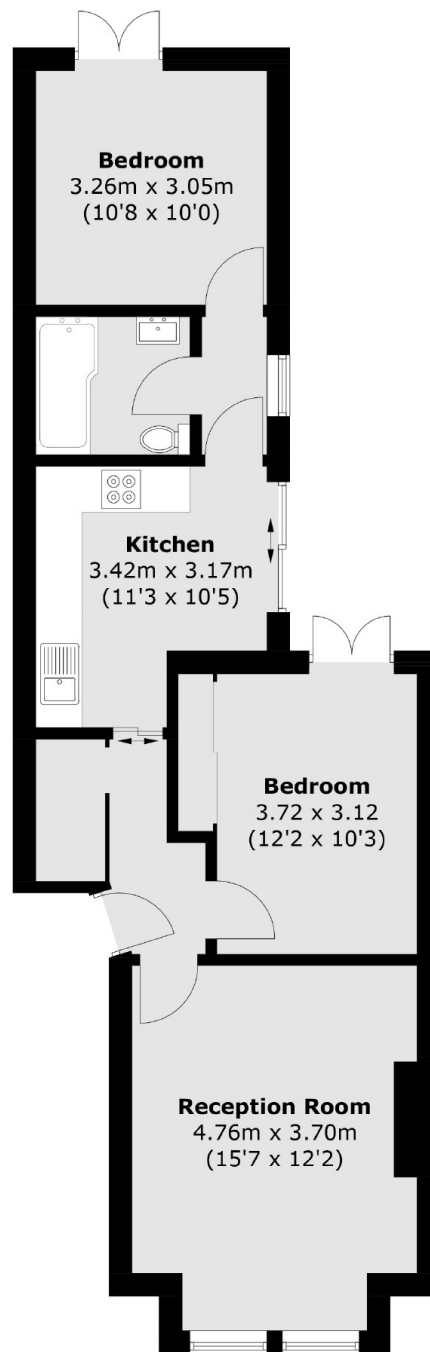
This ground floor two bedroom period conversion has high ceilings, feature fireplaces and double glazed sash windows retaining much of the period charm. Modernised throughout there are private gardens front and rear with the potential to create off street parking.

Located in the heart of Ealing Broadway with many local amenities on your doorstep from boutique shops, bars, pubs, restaurants and convenience stores. Transport links include Ealing Broadway, Central Line, District Line, Mainline and Elizabeth Line with many bus routes too.

Features

- Two Bedrooms
- Ground Floor
- Private Garden
- Recently Modernised
- Prime Location
- No Onward Chain

Haven Lane, London, W5



Total area (approx.): 58.4 sq. m (628.6 sq. ft)