



Rowan Close, W5

£755,000

A four/five bedroom family home or perfect buy to let opportunity. Fully refurbished by the existing owners there is further potential to extend, subject to relevant consents. There is a south facing garden and off street parking for multiple cars to the front.

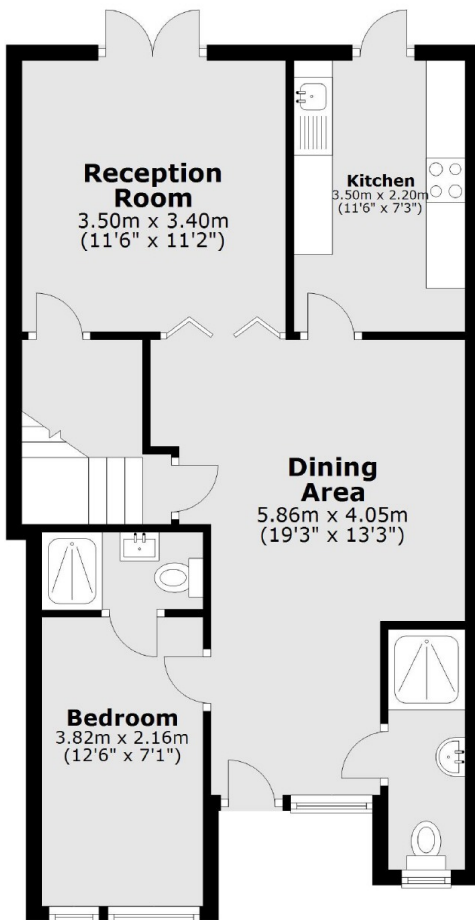
Rowan Close is small, residential, cul-de-sac location. The green space of Gunnersbury Park is a short walk away. For transport you have multiple options with plenty of bus routes, South Ealing and Acton Town stations close by.

Features

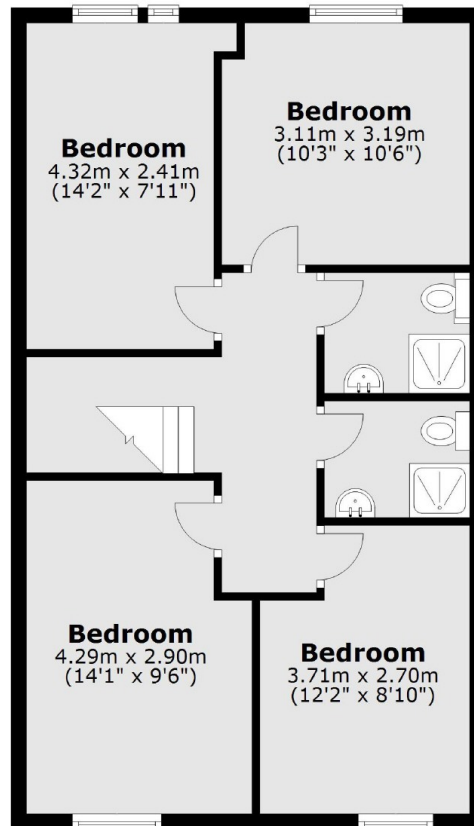
- Five Bedrooms
- Four Bathrooms
- South Facing Garden
- Gunnersbury Park Location
- Off Street Parking
- No Onward Chain

Rowan Close, London, W5

Ground Floor



First Floor



Total area: approx. 115.0 sq. metres (1237.6 sq. feet)