



Highview Road, W13

£975,000

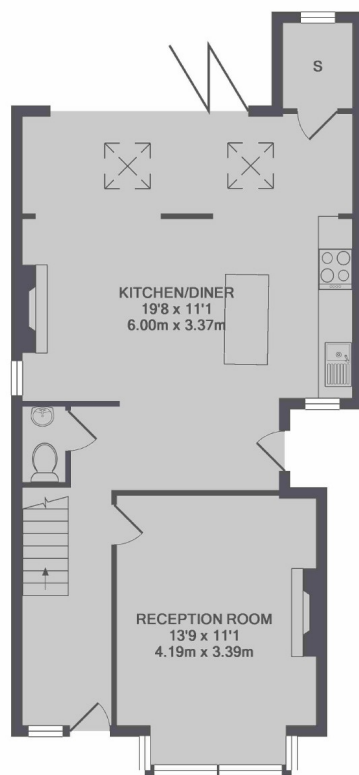
An impressive natural four bedroom house, fully refurbished throughout to a high standard with a private landscaped garden and ample entertaining space on the ground floor. This property could be further extended into the loft.

Located parallel to Argyle Road on a tree-lined residential street with quick access to West Ealing Crossrail station and Cleveland Park.

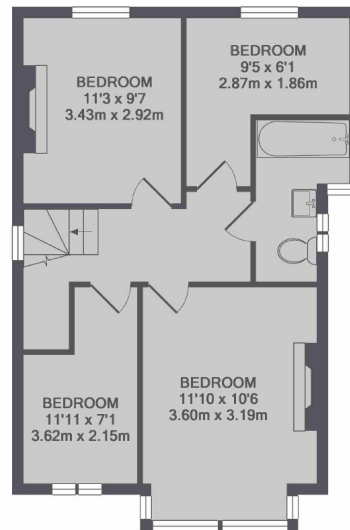
Features

- Landscaped Gardens
- Four Bedrooms
- Two Receptions
- Modern Kitchen
- Rear Studio
- Original Features

Highview Road, London, W13



GROUND FLOOR



1ST FLOOR

TOTAL APPROX. FLOOR AREA 1219 SQ.FT. (113.3 SQ.M.)

Contact

To arrange a viewing call our office on the number below or visit our website.



Energy Rating: E. We aim to make our particulars both accurate and reliable. However they are not guaranteed; nor do they form part of an offer or contract. If you require clarification on any points then please contact us, especially if you're traveling some distance to view. Please note that appliances and heating systems have not been tested and therefore no warranties can be given as to their good working order.