



Gunnersbury Avenue, W5

£499,950

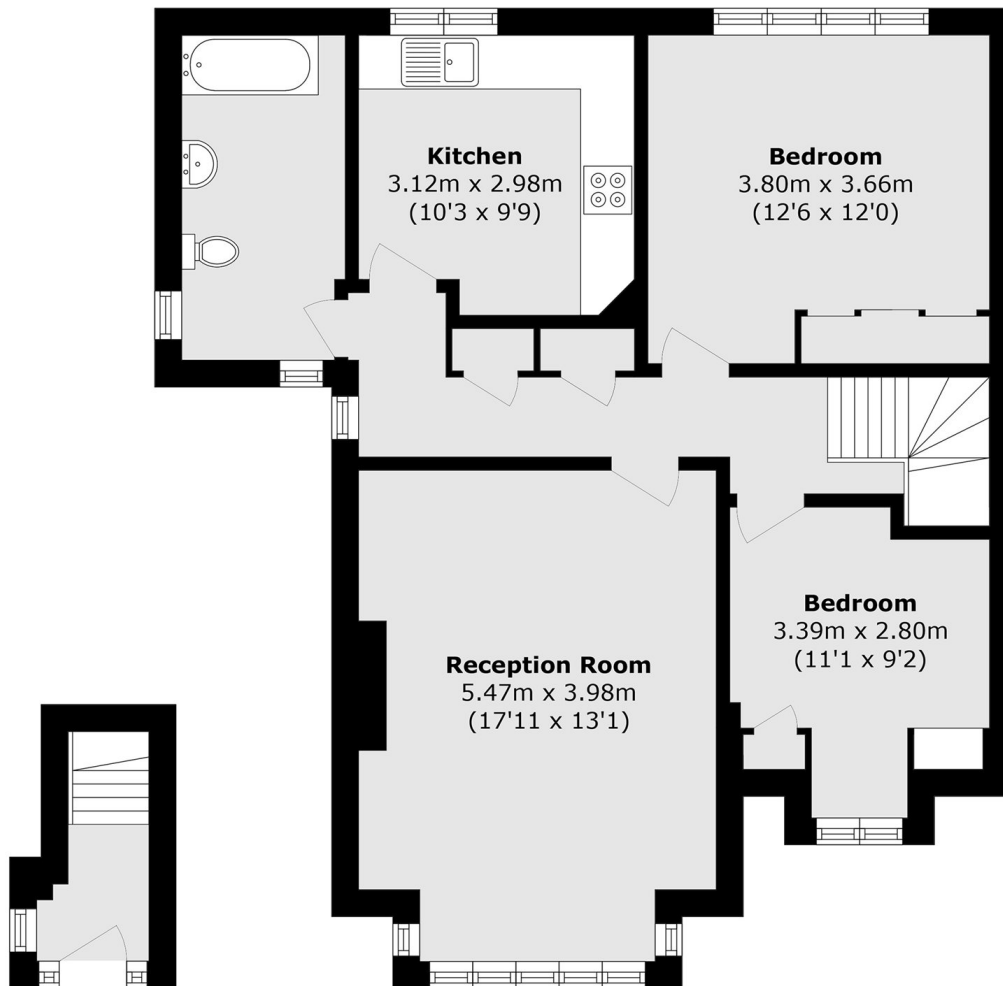
A larger than average two double bedroom first floor conversion flat that is offered to the market with no onward chain. The property further benefits from a shared driveway and a private garage.

Located just 0.3 miles from Acton Town with District and Piccadilly line trains. The green space of Gunnersbury Park and sports facilities are very close by, along with easy vehicular access to the M4, North and South Circular, and the A40.

Features

- Two Bedrooms
- First floor
- Garage
- Shared Driveway
- Close To Station
- No Onward Chain

Gunnersbury Avenue, London, W5



Ground Floor

First Floor

Total area (approx.): 75.0 sq. m (807.3 sq. ft)

Dexters

Ealing
2 New Ealing Broadway
London
W5 2NU
Sales
020 8810 0909

Energy Rating: D. We aim to make our particulars both accurate and reliable. However they are not guaranteed; nor do they form part of an offer or contract. If you require clarification on any points then please contact us, especially if you're traveling some distance to view. Please note that appliances and heating systems have not been tested and therefore no warranties can be given as to their good working order.

 **RICS** | Regulated
Estate Agent
and Letting Agent

[dexters.co.uk](https://www.dexters.co.uk)