



Uxbridge Road, W5

£830 Per week

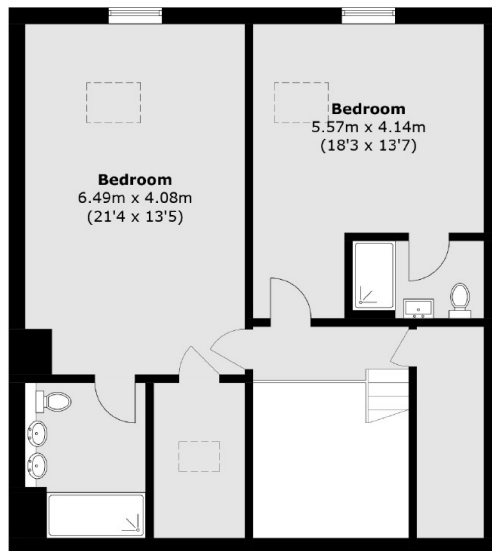
This split-level Penthouse apartment is situated within this modern development in the heart of Ealing Broadway. This apartment has three large double bedrooms, all of which come with en suite bathrooms.

Cavalier House is situated half a mile away from Ealing Broadway station (Central Line, District Line and Heathrow Express) and a short distance to the Broadway's amenities.

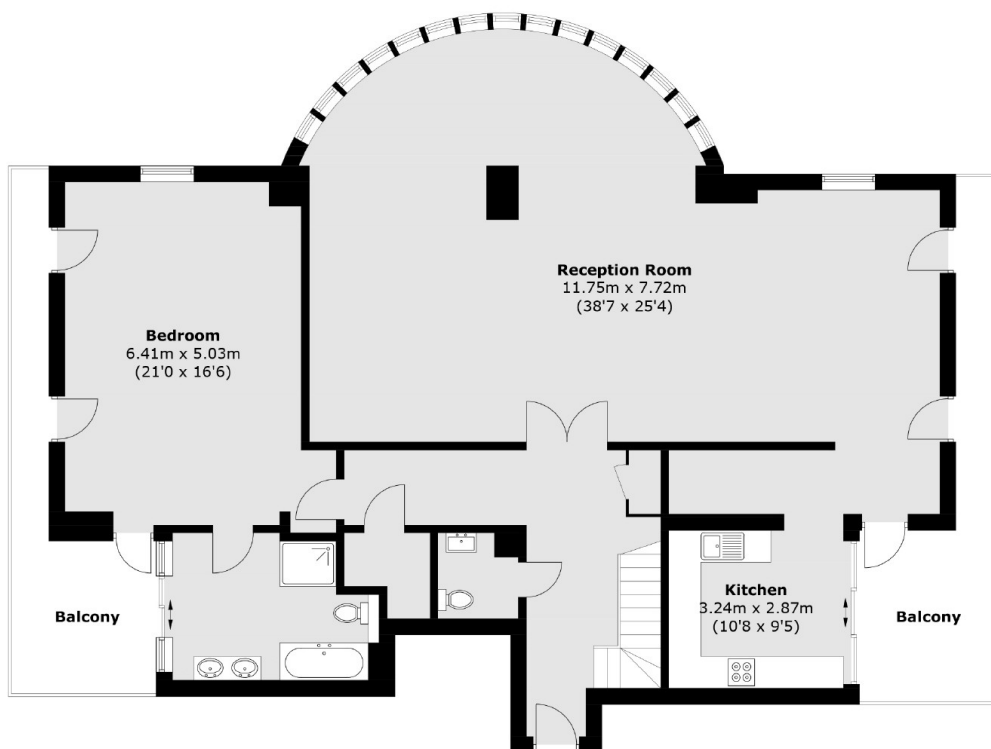
Features

- Three Double Bedrooms
- Three En Suite Bathrooms
- Panoramic Views
- Two Roof Terraces
- Fully-Fitted Kitchen
- Allocated Parking

Uxbridge Road, London, W5



First Floor



Ground Floor

Total area (approx.): 229.3 sq. m (2,468.2 sq. ft)
Balcony area (approx.): 26.1 sq. m (280.9 sq. ft)