



Endsleigh Road, W13

£680,000

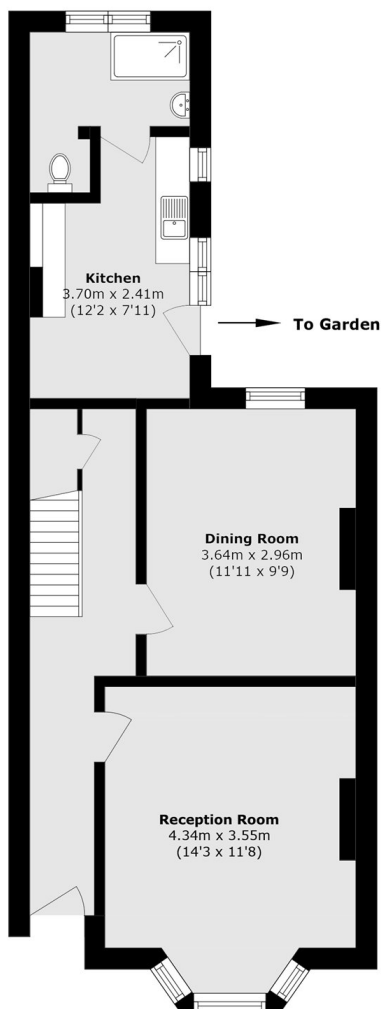
A three bedroom Victorian terrace house that is blank canvas for modernisation throughout. Many neighbouring homes have ground floor extended and loft converted to create significantly larger four/five bed homes. There is a South facing garden and no onward chain.

Located just under half a mile from West Ealing Elizabeth Line station with access to Canary Wharf in as little as approximately thirty minutes. There is a Waitrose superstore close by, along with a wide range of amenities on West Ealing Broadway.

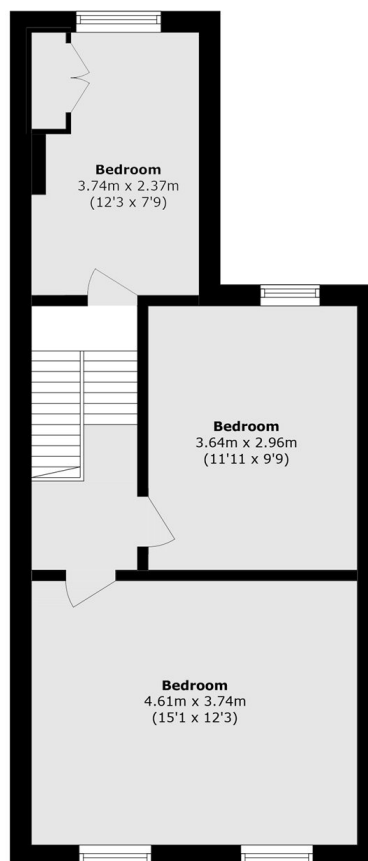
Features

- Three Bedrooms
- Modernisation Required
- Extension Potential
- No Onward Chain
- South Facing Garden
- Close To Station

Endsleigh Road, London, W13



Ground Floor



First Floor

Total area (approx.): 92.0 sq. m (990.2 sq. ft)