



Conolly Road, W7

£275,000

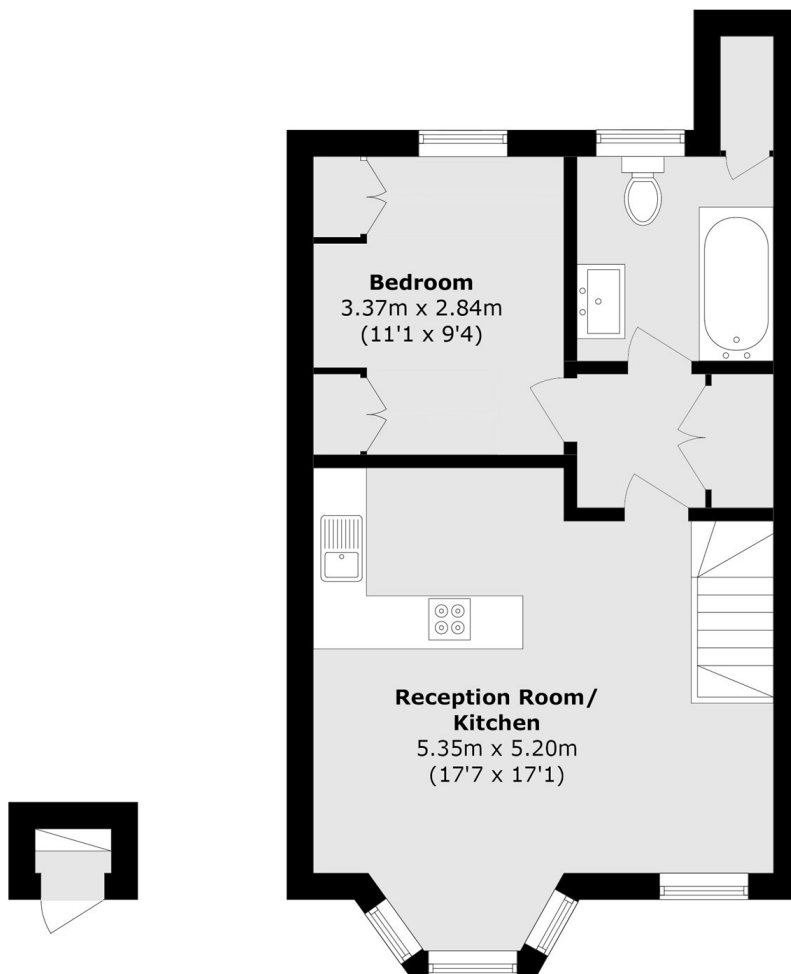
This one bedroom first floor period conversion would benefit from modernisation and occupies an enviable position with a lovely outlook over the green space of Connolly Dell, part of the Churchfields recreation ground. A great first time buy or investment opportunity.

Fantastic for somebody wanting a quiet area with fast transport links, the Hanwell Elizabeth line station is just 0.2 miles, along with the green space of the Churchfields Recreation Ground and Hanwell Zoo just a short walk away.

Features

- One Bedroom
- First Floor
- Modernisation Required
- Close To Station
- Views Over Park
- No Onward Chain

Conolly Road,
London, W7



Ground Floor

First Floor

Total area (approx.): 44.8 sq. m (482.2 sq. ft)

Dexters

Ealing
2 New Ealing Broadway
London
W5 2NU
Sales
020 8810 0909

Energy Rating: C. We aim to make our particulars both accurate and reliable. However they are not guaranteed; nor do they form part of an offer or contract. If you require clarification on any points then please contact us, especially if you're traveling some distance to view. Please note that appliances and heating systems have not been tested and therefore no warranties can be given as to their good working order.

 **RICS** | Regulated
Estate Agent
and Letting Agent

[dexters.co.uk](https://www.dexters.co.uk)