



## Bedford Road, W13

### £499,950

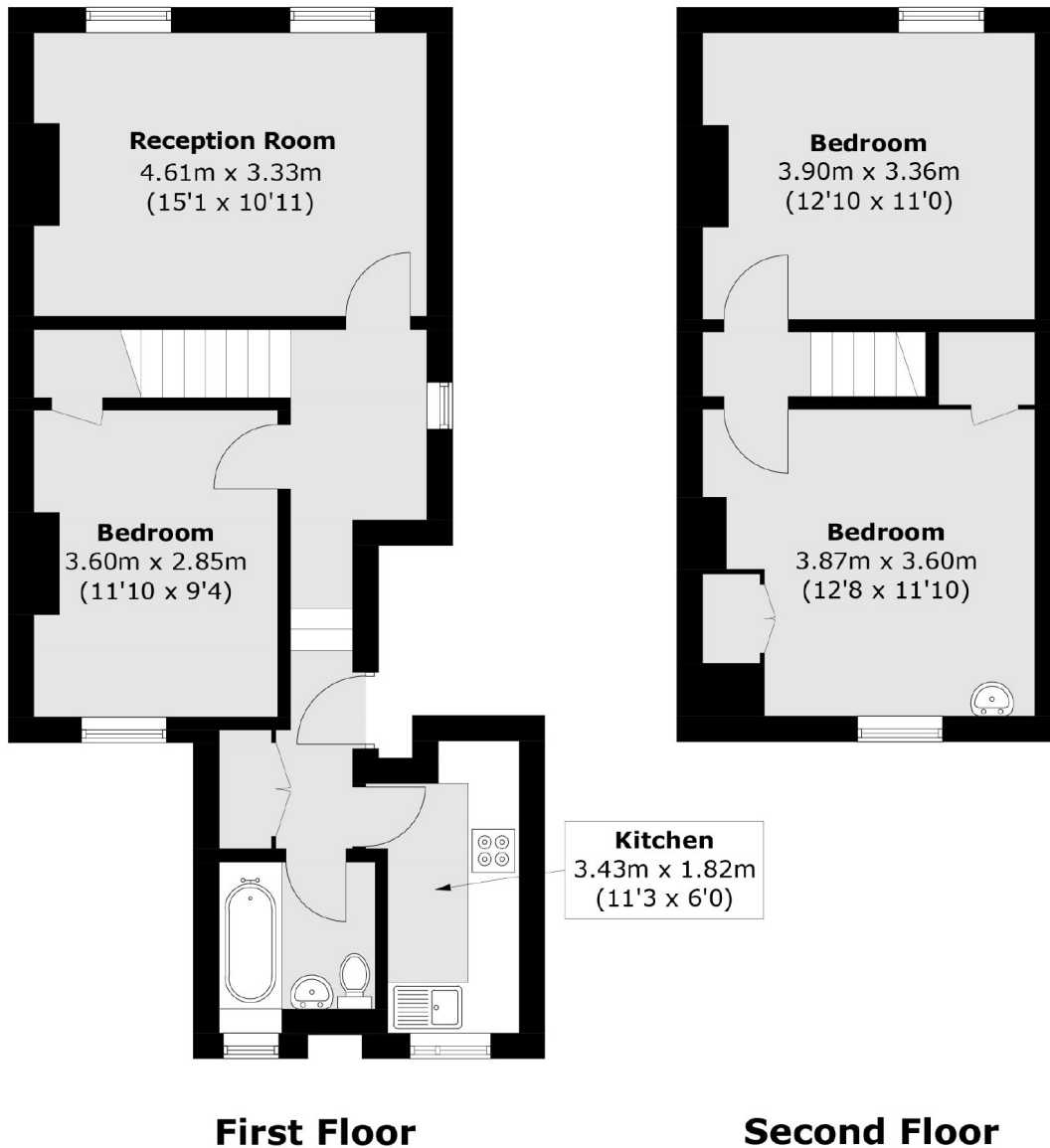
A spacious three bedroom split level period conversion occupying the first and second floors. There is a large reception room to the front, a spacious double bedroom, separate kitchen and bathroom on the first floor. On the second floor there are two further double bedrooms.

Located just moments from the Waitrose superstore and West Ealing Elizabeth line station with access to Bond Street in as little as twenty four minutes and Canary wharf in forty. Heathrow is approximately seventeen minutes in the opposite direction.

### Features

- Three Bedrooms
- One Reception
- Split Level
- Period Conversion
- Close To Transport
- No Onward Chain

Bedford Road,  
London, W13



Total area (approx.): 78.1 sq. m (840.6 sq. ft)