



## Mount Avenue, W5

### £520,000

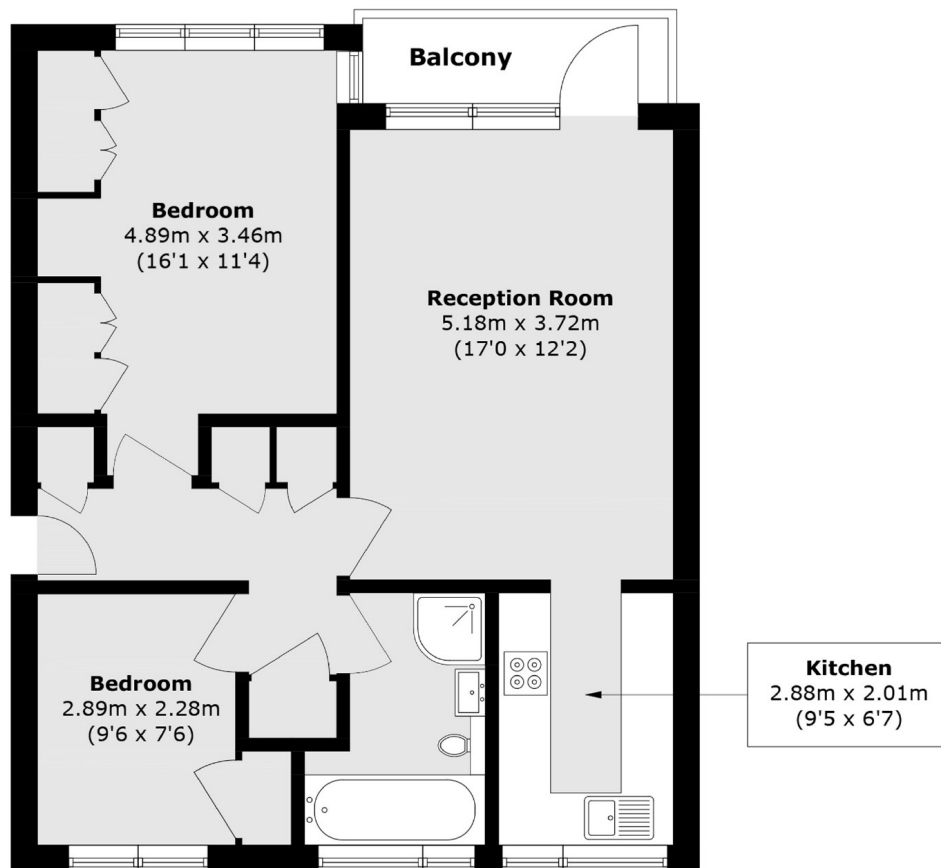
Situated in a popular residential block and location with mature communal gardens is this two bedroom ground floor apartment. Offered to the market with no onward chain, there is a spacious reception room with separate kitchen and a ground floor balcony.

Located on Mount Avenue and ideally positioned between the busy shops and transport hub of Ealing Broadway and the tranquil, village feel of Pitshanger Lane. Transport links include the Elizabeth Line, Central and District lines, along with national Rail services.

### Features

- Two Bedrooms
- Ground Floor
- Purpose Built
- Residents Parking
- Balcony
- No Onward Chain

# Mount Avenue, London, W5



Total area (approx.): 63.2 sq. m (680.2 sq. ft)  
Balcony area (approx.): 3.4 sq. m (36.5 sq. ft)

## Dexters

Ealing  
2 New Ealing Broadway  
London  
W5 2NU  
Sales  
020 8810 0909

Energy Rating: . We aim to make our particulars both accurate and reliable. However they are not guaranteed; nor do they form part of an offer or contract. If you require clarification on any points then please contact us, especially if you're traveling some distance to view. Please note that appliances and heating systems have not been tested and therefore no warranties can be given as to their good working order.

 **RICS** | Regulated  
Estate Agent  
and Letting Agent

[dexters.co.uk](https://www.dexters.co.uk)