



Bathgate Place, W13

£877 Per week

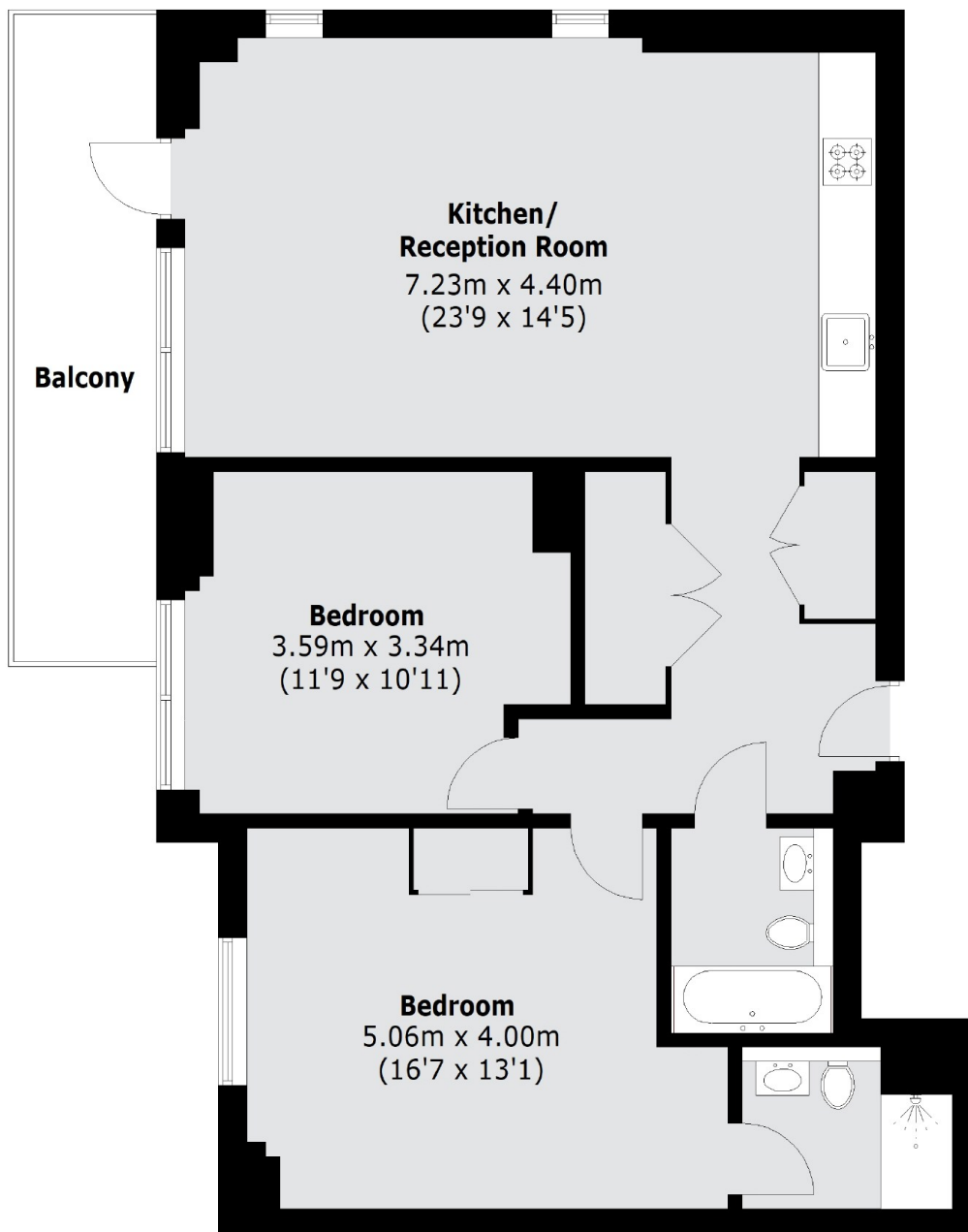
SHORT LET - A stylish two bedroom apartment in this brand new development finished to the highest standard throughout. One of the prime features is the East facing balcony offering city views.

Bathgate Place is situated off Gordon Road under half a mile from West Ealing Station (National Rail, Elizabeth Line) and just over half a mile from Ealing Broadway.

Features

- Two Bedrooms
- Two Bathrooms
- Private Balcony
- Concierge
- Air Conditioning
- All Utility Bills Included

Bathgate Place, London, W13



Total area (approx.): 87.0 sq. m (936.5 sq. ft)
Balcony : 10.2 sq. m (109.8 sq. ft)

Dexters

Ealing
2 New Ealing Broadway
London
W5 2NU
Lettings
020 8810 1919

Energy Rating: B. We aim to make our particulars both accurate and reliable. However they are not guaranteed; nor do they form part of an offer or contract. If you require clarification on any points then please contact us, especially if you're traveling some distance to view. Please note that appliances and heating systems have not been tested and therefore no warranties can be given as to their good working order.

 **RICS** | Regulated
Estate Agent
and Letting Agent

[dexters.co.uk](https://www.dexters.co.uk)