



Ealing Village, W5

£450,000

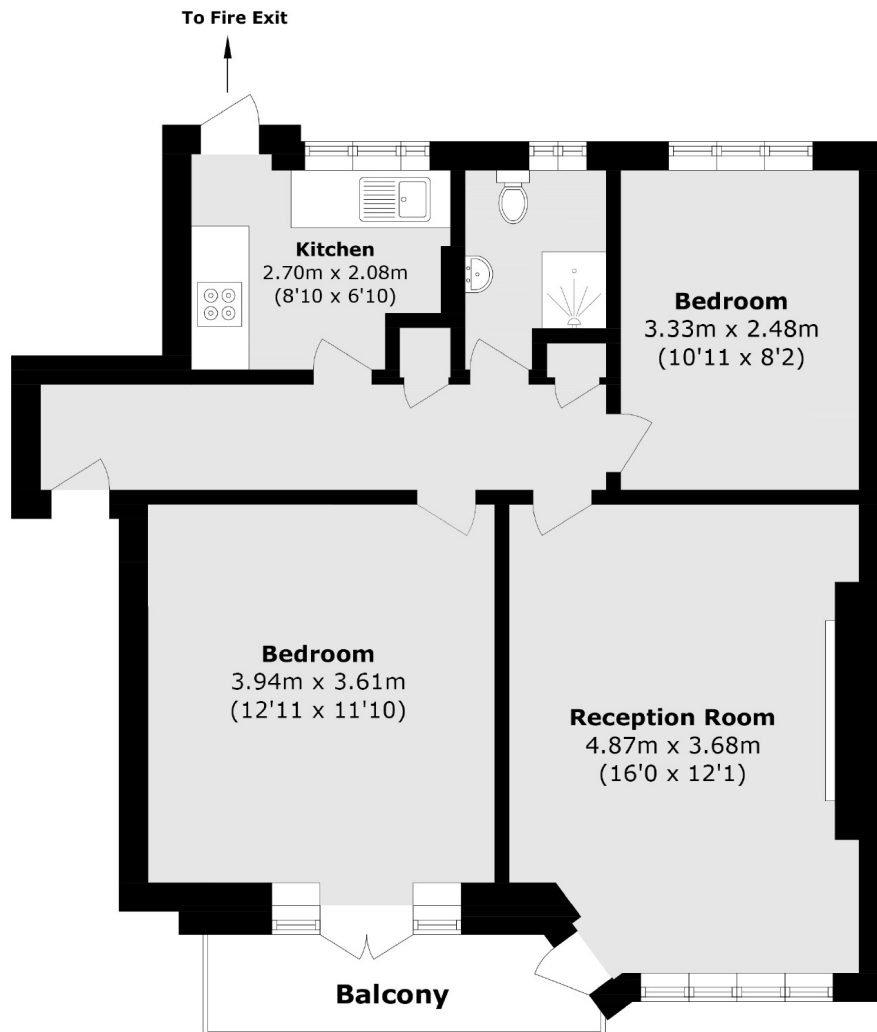
Located on the second floor this two bedroom apartment has been refurbished by the current owner to a high standard with new kitchen and bathroom, along with modernisation throughout. There is a south facing balcony overlooking the peaceful communal grounds.

Ealing Village is centrally located less than half a mile to Ealing Broadway Station (Central Line, District Line and Elizabeth Line) and under a quarter of a mile to North Ealing Station (Picadilly Line). This Art Deco development is privately gated with swimming pool, tennis courts and caretaker.

Features

- Two Bedrooms
- Second Floor
- Balcony
- Swimming Pool
- Tennis Courts
- Gated Development

Ealing Village, London, W5



Total area (approx.): 58.8 sq. m (632.9 sq. ft)
Balcony area (approx.): 3.8 sq. m (40.9 sq. ft)

Dexters

Ealing
2 New Ealing Broadway
London
W5 2NU
Sales
020 8810 0909

Energy Rating: . We aim to make our particulars both accurate and reliable. However they are not guaranteed; nor do they form part of an offer or contract. If you require clarification on any points then please contact us, especially if you're traveling some distance to view. Please note that appliances and heating systems have not been tested and therefore no warranties can be given as to their good working order.

 **RICS** | Regulated
Estate Agent
and Letting Agent

[dexters.co.uk](https://www.dexters.co.uk)