



Claremont Road, W13

£900,000

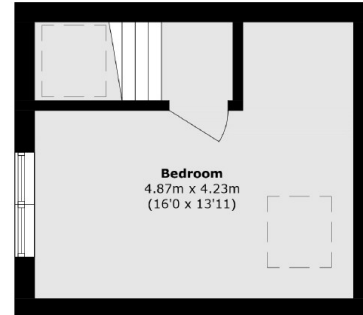
A superb three bedroom new home on Hathaway Gardens, spread across three well proportioned floors. The ground floor features a contemporary open plan kitchen and dining area, complete with a central island and sleek modern fittings and integral appliances. A separate reception room provides a quiet retreat or formal entertaining space. There is the added convenience of a downstairs toilet. Upstairs there are three comfortable bedrooms and a family bathroom spread across two upper levels making excellent use of natural light.

28 Claremont Road is just a 0.3 mile walk to Castle Bar Park Station which provides a short journey to West Ealing. West Ealing station is alternatively 0.7 miles from the development which is on the Elizabeth line and provides excellent access to Central London,

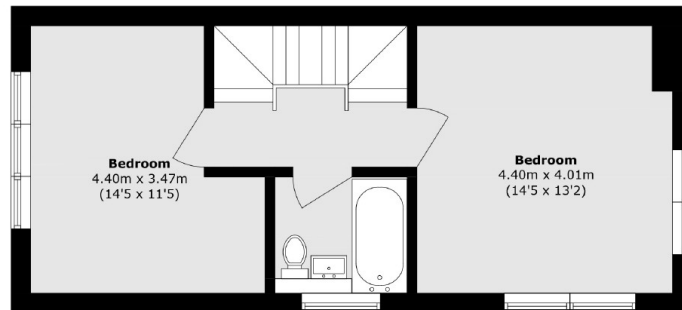
Features

- 10 Year Build Warranty
- Ready To Move In
- New Build
- Freehold
- Private Garden
- Close To Train Station

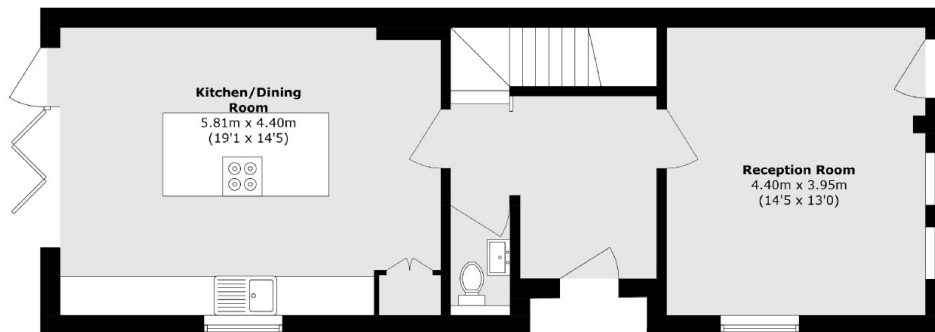
Claremont Road, London, W13



Second Floor



First Floor



Ground Floor

Total area (approx.): 120.3 sq. m (1294.9 sq. ft)