



## Argyle Road, W13

### £535,000

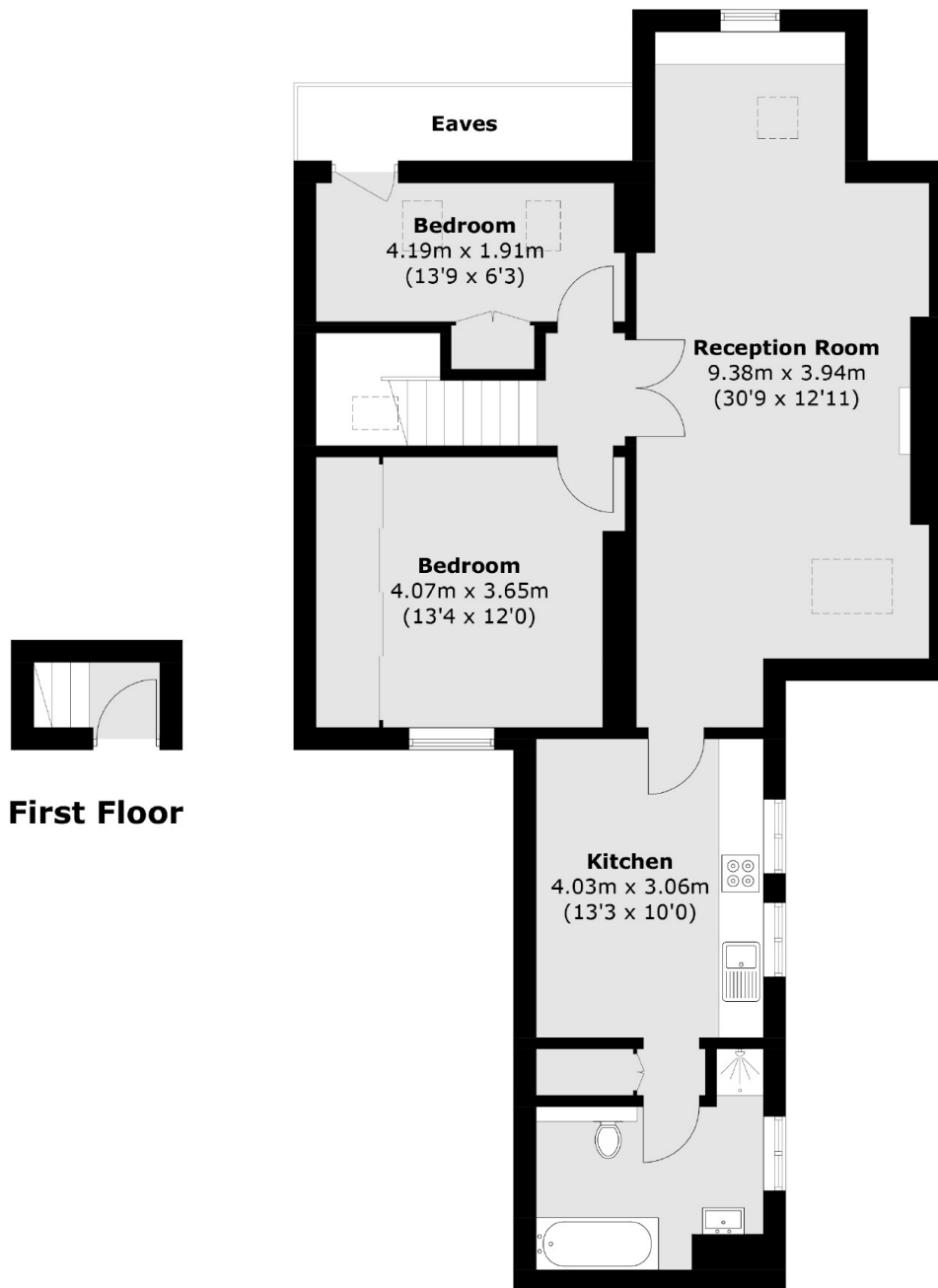
Perfect for first-time buyers, this spacious two-bedroom apartment spans over 850 sq ft, comes with a share of the freehold, includes allocated parking, and is being sold chain-free.

This property is located just moments from the green spaces of Scotch Common. Pitshanger Lane is only 0.8 miles away and offers a variety of shops, restaurants, and convenience stores. Excellent transport links include West Ealing Station (Elizabeth Line and Mainline Rail), along with numerous local bus routes.

### Features

- Two Bedrooms
- Off-Street Parking
- Share of the Freehold
- Over 850sqft
- Close to Transport
- No Onward Chain

# Argyle Road, London, W13



**First Floor**

## **Second Floor**

Total area (approx.): 87.3 sq. m (939.7 sq. ft)  
(Excluding Eaves)

# Dexters

Ealing  
2 New Ealing Broadway  
London  
W5 2NU  
Sales  
020 8810 0909

Energy Rating: C. We aim to make our particulars both accurate and reliable. However they are not guaranteed; nor do they form part of an offer or contract. If you require clarification on any points then please contact us, especially if you're traveling some distance to view. Please note that appliances and heating systems have not been tested and therefore no warranties can be given as to their good working order.

 **RICS** | Regulated  
Estate Agent  
and Letting Agent

[dexters.co.uk](http://dexters.co.uk)