

St. Marys Road, W5

£685,000

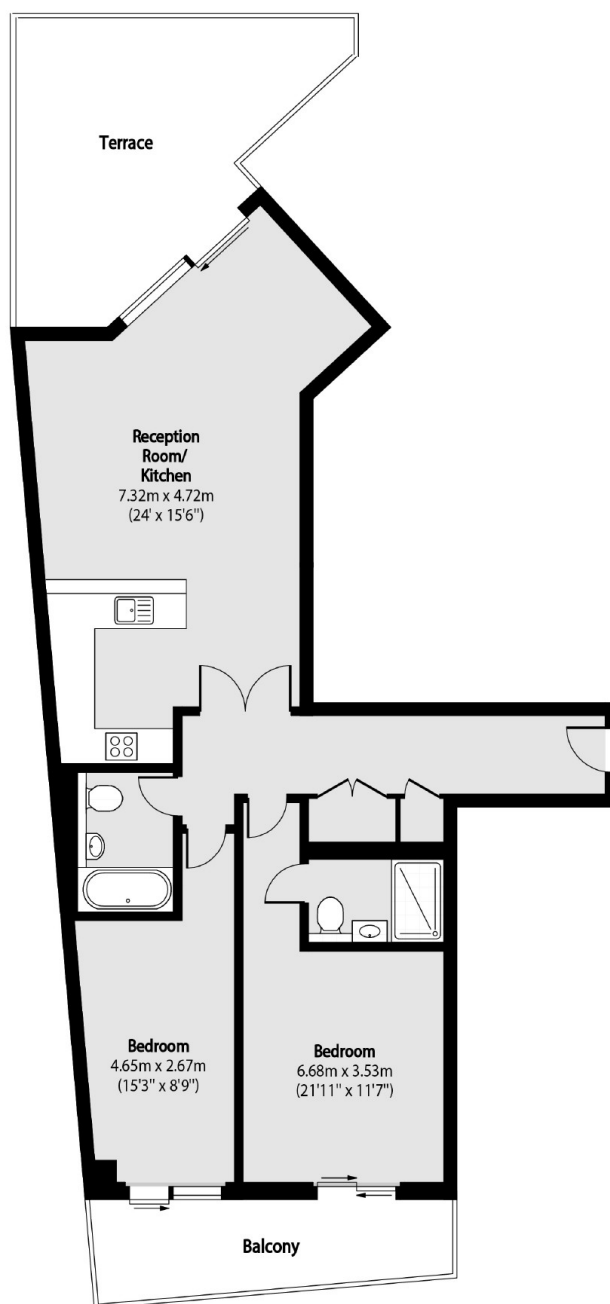
This spacious two bedroom and two bathroom first floor apartment is offered to the market with no onward chain and offers nearly 1000sq.ft of Living space. There are two balconies, front and rear, secure video entry, lift access, allocated and electric gated secure undercroft parking.

Located for easy access to Ealing Broadway and South Ealing for the Elizabeth, Central, District lines and national rail services. There are numerous shops, restaurants, gyms and cafés along the South Ealing Road and within the Ealing Broadway shopping centre, a short walk away.

Features

- Two Bedrooms
- Two Bathrooms
- Gated Parking
- No Onward Chain
- Lift Access
- Close To Transport

St. Marys Road, London, W5



Total area (approx): 91.97 sq.m (990 sq. ft)

Terrace total area (approx): 21.46 sq.m (231 sq. ft)

Balcony total area (approx): 9.56 sq.m (103 sq. ft)

Dexters

Ealing
2 New Ealing Broadway
London
W5 2NU
Sales
020 8810 0909

Energy Rating: C. We aim to make our particulars both accurate and reliable. However they are not guaranteed; nor do they form part of an offer or contract. If you require clarification on any points then please contact us, especially if you're traveling some distance to view. Please note that appliances and heating systems have not been tested and therefore no warranties can be given as to their good working order.

 **RICS** | Regulated
Estate Agent
and Letting Agent

[dexters.co.uk](https://www.dexters.co.uk)