



## Colwyn Avenue, UB6

£599,999

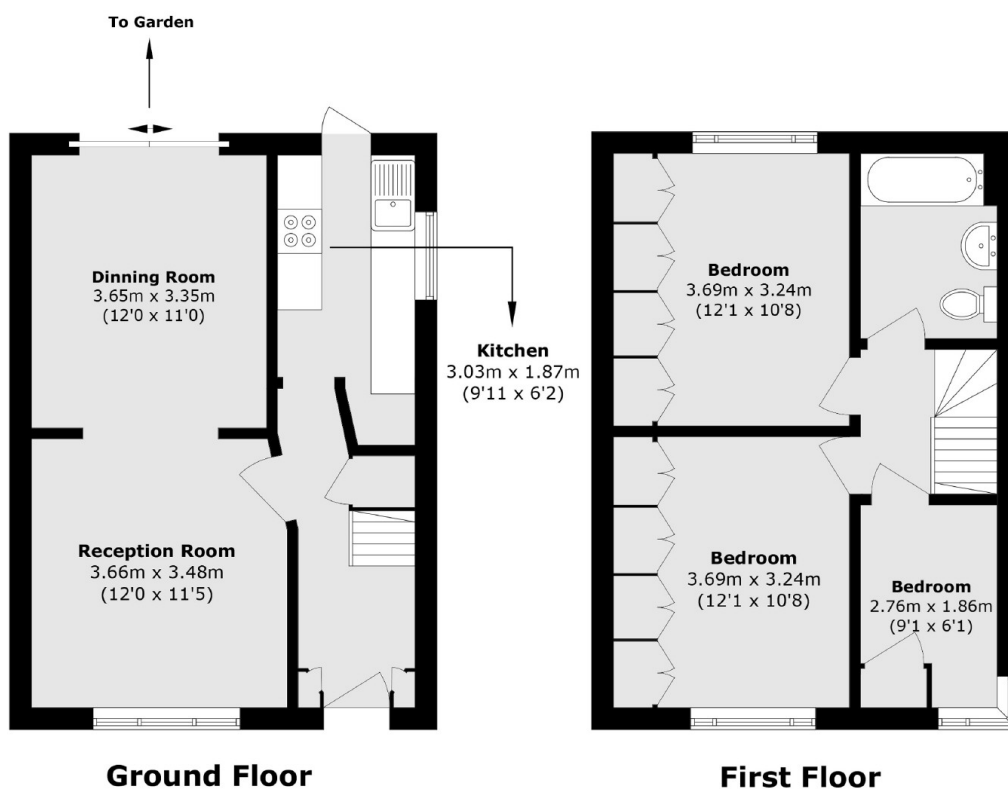
We are delighted to introduce this three bedroom house which has been modernised throughout, a beautiful south facing garden and the potential to extend at the rear and loft. Perivale station is located around the corner and there are outstanding rated schools nearby making it the perfect home for a family.

Located less than half a mile from Perivale station with Central line tube into and across London. Easy vehicular access with the A40 into and out of London and there are also well regarded local schools.

### Features

- Three Bedrooms
- Potential To Extend (STPP)
- Off Street Parking
- South Facing Garden
- Close to Transport
- Recently Renovated

# Colwyn Avenue, Greenford, UB6



Total area (approx.) 1735.7 sqm (3721.1 sq ft)

## Dexters

Ealing  
2 New Ealing Broadway  
London  
W5 2NU  
Sales  
020 8810 0909

Energy Rating: D. We aim to make our particulars both accurate and reliable. However they are not guaranteed; nor do they form part of an offer or contract. If you require clarification on any points then please contact us, especially if you're traveling some distance to view. Please note that appliances and heating systems have not been tested and therefore no warranties can be given as to their good working order.

 **RICS** | Regulated  
Estate Agent  
and Letting Agent

[dexters.co.uk](https://www.dexters.co.uk)