



Ashbourne Road, W5

£1,015 Per week

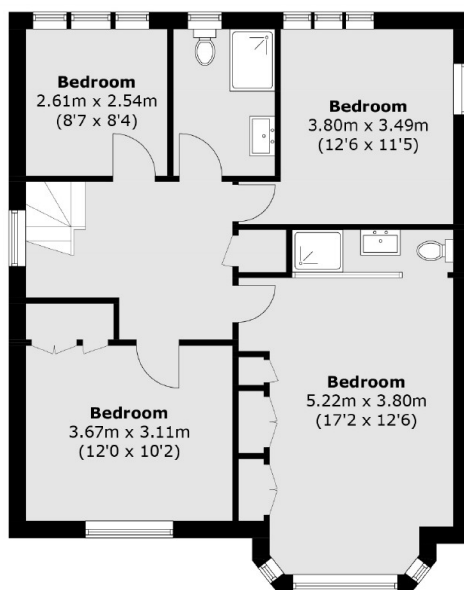
An impressive five bedroom detached house in the Haymills Estate with generous living space making it ideal for a growing family. Recently refurbished, it has a spacious double reception room, off-street parking and private garden.

Ashbourne Road is situated within easy reach to both West Acton (Central Line) and North Ealing stations (Piccadilly Line) and just off the North Circular and A40 for drivers.

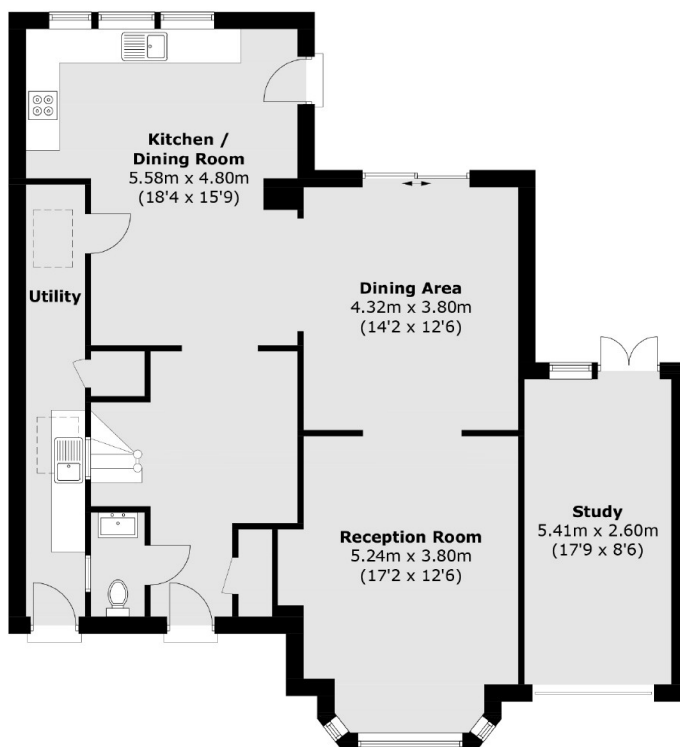
Features

- Five Bedrooms
- Two Bathrooms
- Detached
- Off-Street Parking
- Large Private Garden
- Wood Flooring

Ashbourne Road, London, W5



First Floor



Ground Floor

Total area (approx.): 154.6 sq. m (1,664.8 sq. ft)
Outbuilding area: 14.1 sq. m (151.3 sq. ft)