



Corfton Road, W5

£545,000

This bright and spacious two double bedroom top floor apartment has been updated by the current owners and is presented in great condition throughout. The property has the added benefit of having a garage, residents parking and is offered with no onward chain.

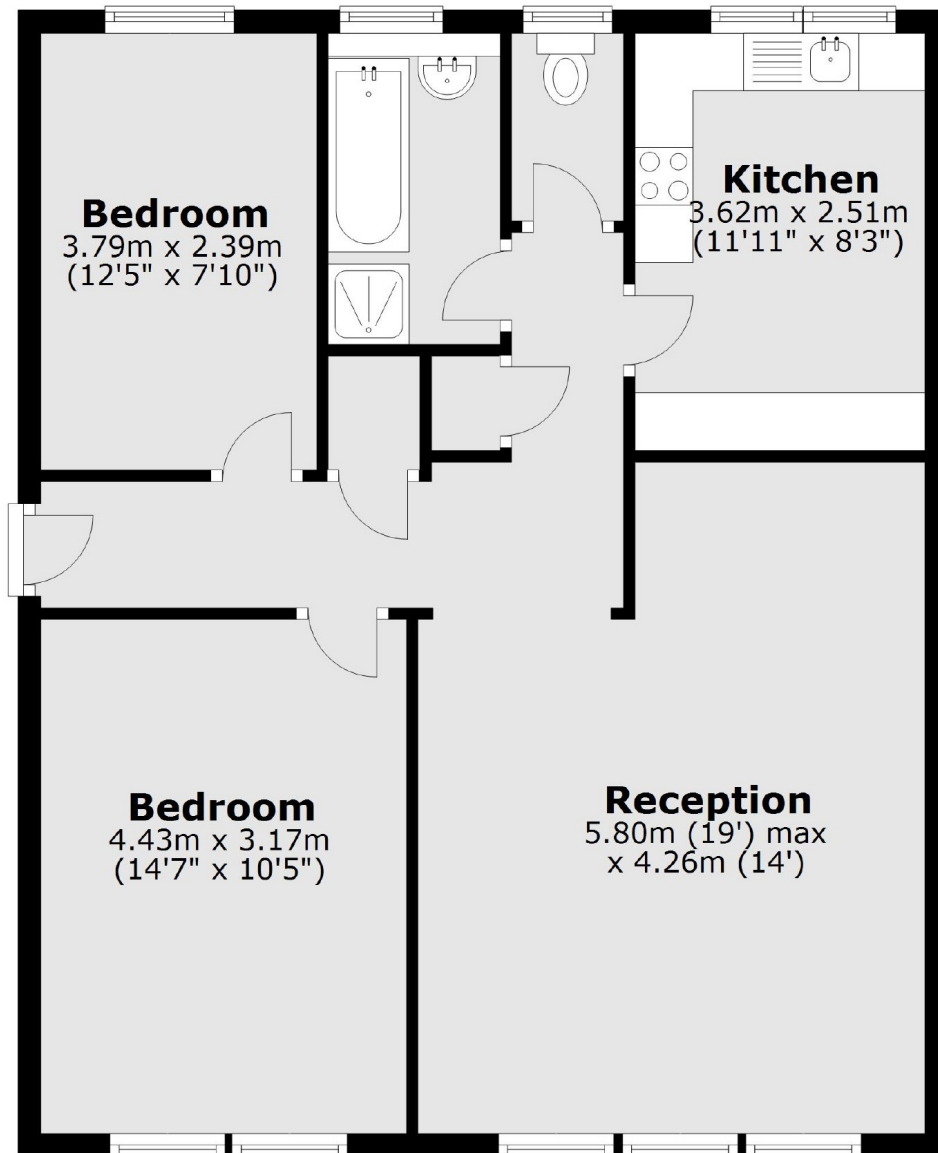
Corfton Lodge is just half a mile from the transport links of Ealing Broadway with Elizabeth, Central, District lines, along with National Rail services. There are excellent local schools close by, along with the shops and amenities of Ealing Broadway.

Features

- Two Bedrooms
- Top Floor
- Garage
- Long Lease
- Excellent Condition
- No Onward Chain

Corfton Road,
London, W5

Third Floor



Total area: approx. 73.1 sq. metres (786.9 sq. feet)