



Hanger Lane, W5

£475,000

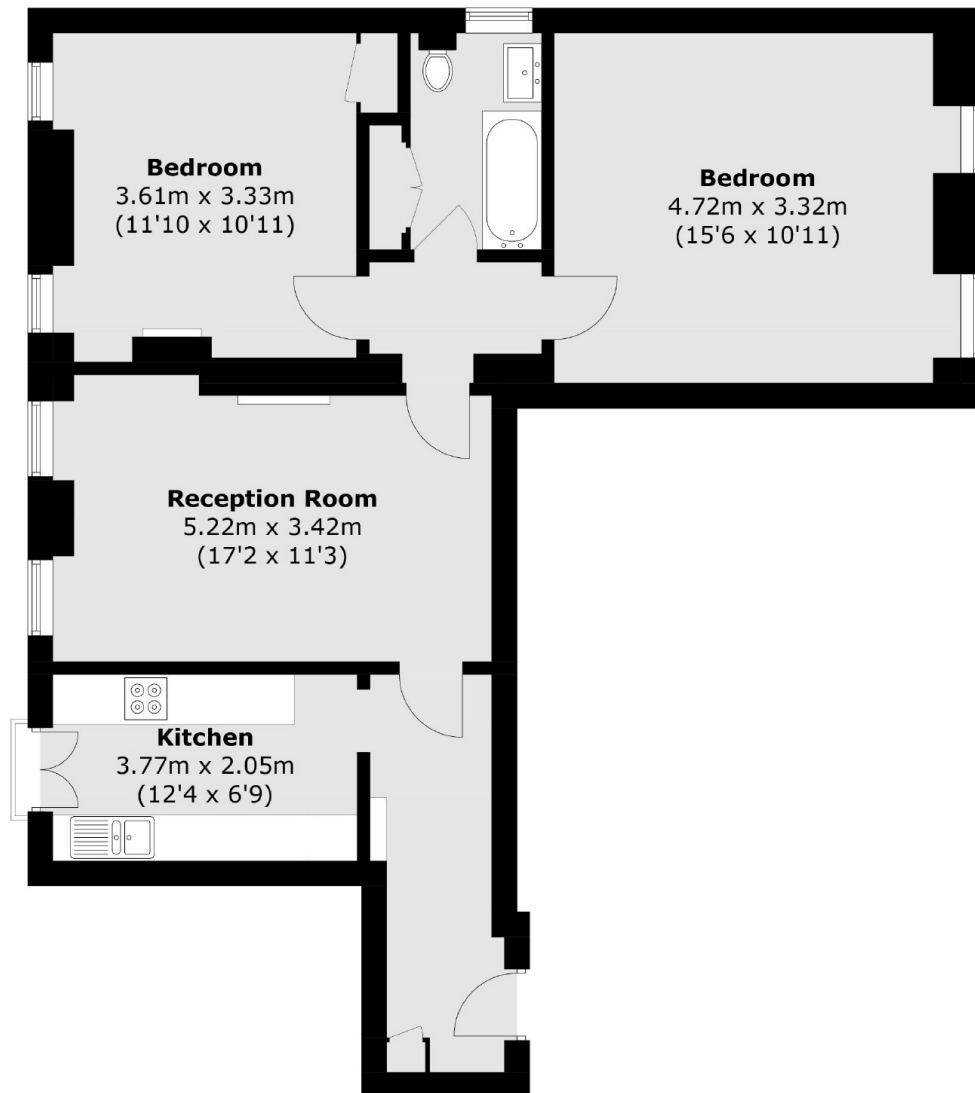
An immaculately presented ground floor flat with two spacious double bedrooms and separate kitchen and reception room. The property comes with a large communal garden space and allocated off street parking. With a long lease and great transport links, this flat offers the perfect opportunity for both buyers and investors looking for a move in ready home.

Located next to the green space of Hanger Hill Park and approximately a mile to Ealing Broadway (Elizabeth Line). Easy access onto the North Circular and the A40. Hanger Lane (Central Line) and Park Royal (District and Piccadilly lines) are close by. Park Royal has many amenities including restaurants and a cinema.

Features

- Two Bedrooms
- 900+ Year Lease
- Off Street Parking
- Communal Gardens
- Close to Transport
- Share of Freehold
- Chain Free

Hanger Lane, London, W5



Total area (approx.): 78.4 sq. m (843.9 sq. ft)

Dexters

Ealing
2 New Ealing Broadway
London
W5 2NU
Sales
020 8810 0909

Energy Rating: D. We aim to make our particulars both accurate and reliable. However they are not guaranteed; nor do they form part of an offer or contract. If you require clarification on any points then please contact us, especially if you're traveling some distance to view. Please note that appliances and heating systems have not been tested and therefore no warranties can be given as to their good working order.

 **RICS** | Regulated
Estate Agent
and Letting Agent

[dexters.co.uk](https://www.dexters.co.uk)