



Gunnersbury Avenue, W5

£725,000

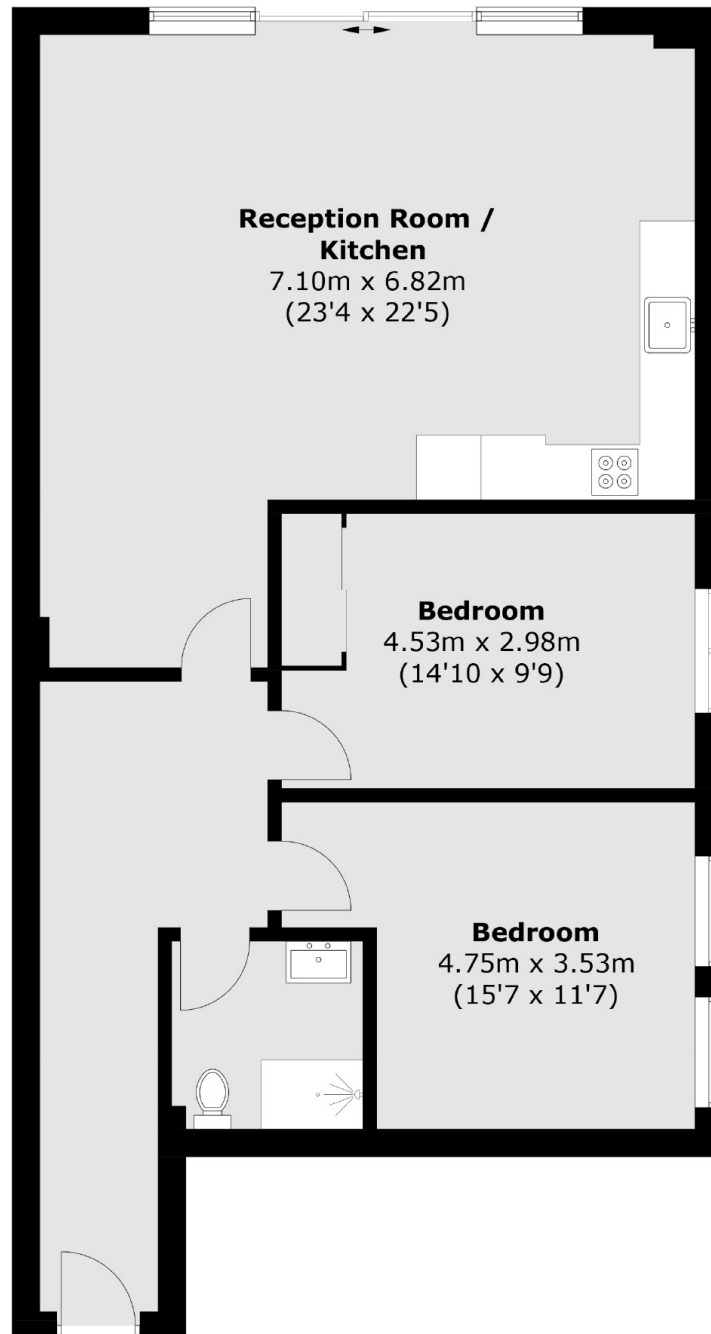
This spacious two double bedroom lower apartment is set on the lower ground level for complete peace and quiet. The property has high ceilings throughout, light wells, a large kitchen/reception and a private patio along with allocated parking. Constructed in 2021 and still with a new homes warranty there is 940 sq.ft Of living space.

Gunnersbury Avenue is located 0.5 miles from Ealing Common tube station (Piccadilly & District Line) and Ealing Broadway Station which is 0.9 miles away (Elizabeth Line, Central Line, District line & Mainline Rail). The green space of Ealing Common is a short walk.

Features

- Two Bedrooms
- Private Terrace
- Allocated Parking
- No Onward Chain
- Residents Gym and Communal Gardens
- Long Lease

Gunnersbury Avenue,
London, W5



Total area (approx.): 87.4 sq. m (940.1 sq. ft)

Dexters

Ealing
2 New Ealing Broadway
London
W5 2NU
Sales
020 8810 0909

Energy Rating: C. We aim to make our particulars both accurate and reliable. However they are not guaranteed; nor do they form part of an offer or contract. If you require clarification on any points then please contact us, especially if you're traveling some distance to view. Please note that appliances and heating systems have not been tested and therefore no warranties can be given as to their good working order.

 **RICS** | Regulated
Estate Agent
and Letting Agent

[dexters.co.uk](https://www.dexters.co.uk)