



Grange Road, W5

£375,000

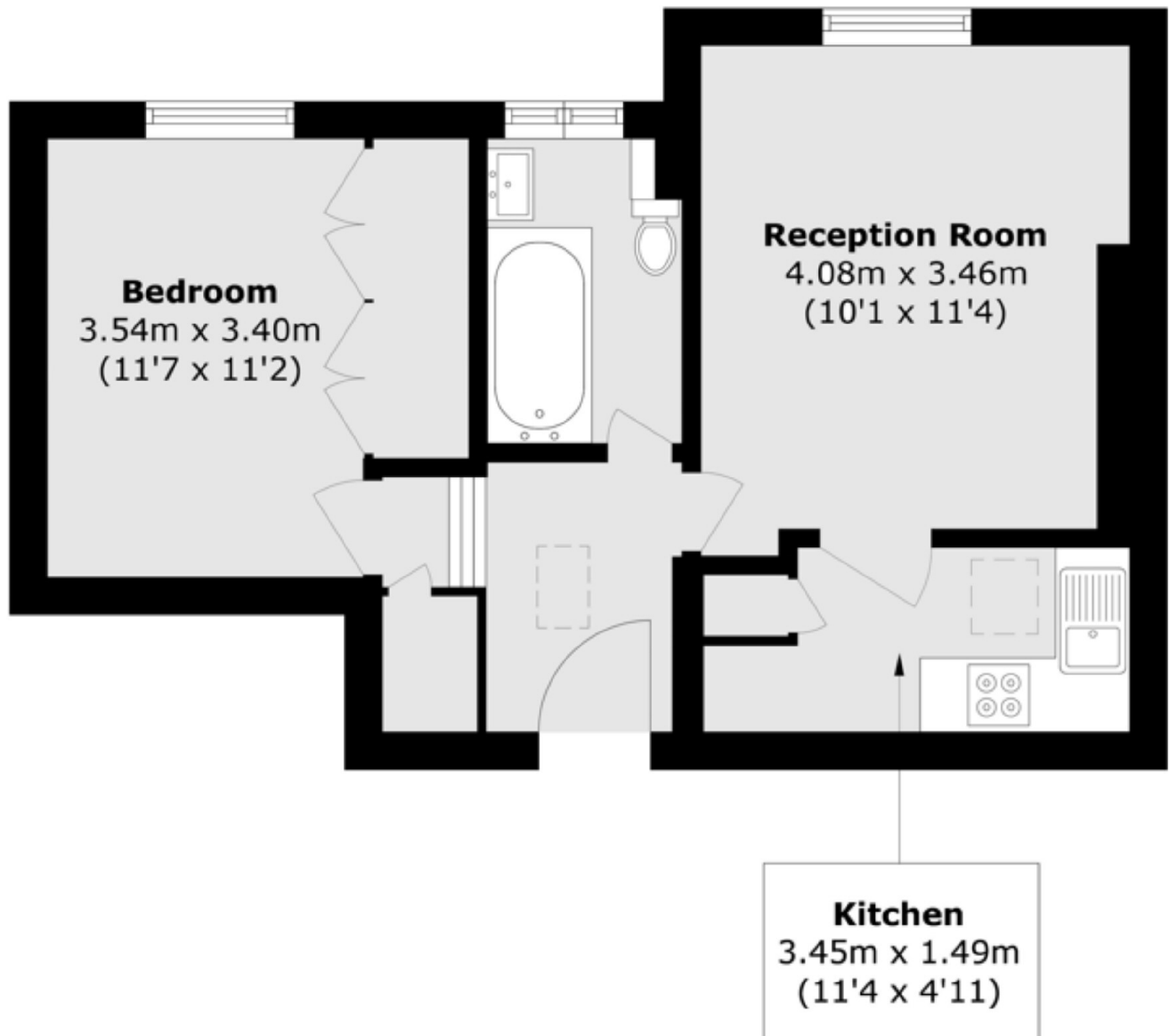
A spacious one-bedroom, top-floor conversion apartment, perfect as a first-time buy or buy-to-let investment. In modern condition throughout, the property further benefits from a communal garden and a share of the freehold.

Grange Road is ideally located close to Ealing Broadway, which offers a wide range of shops and amenities, as well as a station providing access to the Elizabeth Line, Central and District lines, and National Rail services. Ealing Common is just moments away, offering additional access to the Piccadilly Line.

Features

- No Onward Chain
- Share of Freehold
- One Bedroom
- Top Floor
- Period Conversion

Grange Road,
London, W5



Total area (approx.): 41.0 sq. m (441.3 sq. ft)

Dexters

Ealing
2 New Ealing Broadway
London
W5 2NU
Sales
020 8810 0909

Energy Rating: D. We aim to make our particulars both accurate and reliable. However they are not guaranteed; nor do they form part of an offer or contract. If you require clarification on any points then please contact us, especially if you're traveling some distance to view. Please note that appliances and heating systems have not been tested and therefore no warranties can be given as to their good working order.

 **RICS** | Regulated
Estate Agent
and Letting Agent

[dexters.co.uk](https://www.dexters.co.uk)