



Broadway, W13

£325,000

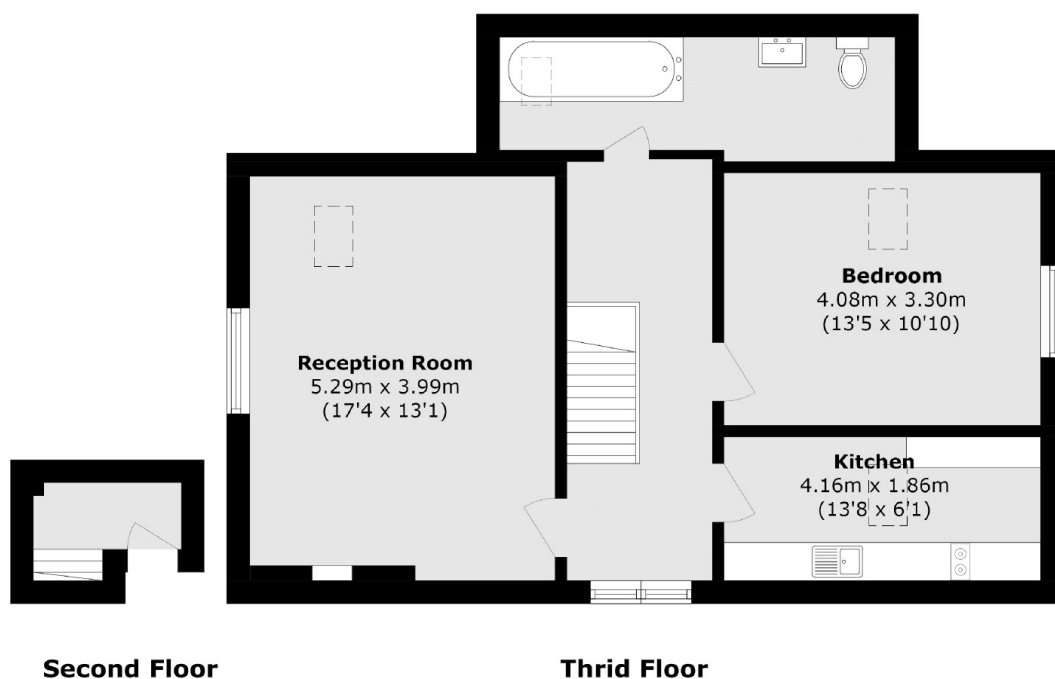
An immaculately presented one bedroom flat is close by to the local amenities of West Ealing as well as the Elizabeth Line station located just half a mile away. The property has had the lease recently extended and offers over 700 square foot of space making it the perfect option for young professionals as well as investors looking to convert into a 2 bedroom flat. A communal garden is also located at the rear of the property offering outside space.

The property is situated 0.6 Miles from West Ealing station (Elizabeth Line & Mainline Rail). The Broadway (West Ealing) consists of many restaurants, shops and salons. The superstore Waitrose is also 0.5 miles away.

Features

- One Bedroom
- Newly Extended Lease
- Close to Transport
- Communal Garden
- Potential To Convert Into Two Bedrooms

Broadway, London, W13



Total area (approx.): 66.1 sq. m (711.5 sq. ft)