



Woodhouse Close, UB6

£599,950

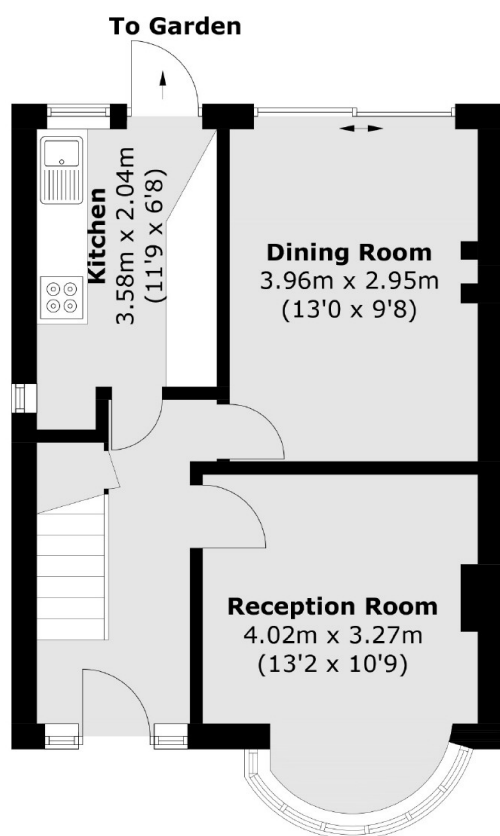
This charming three bedroom 1930's semi-detached house is a blank canvas to be modernised, loft converted, and extended to create the perfect long term family home. There is potential to create off street parking to the front, subject to consent, along with a large garden and garage to the rear.

Located in a secluded cul-de-sac within the popular residential Medway housing area. There are well regarded local schools, multiple green spaces and sports grounds, along with Perivale station on the Central Line, which is approximately half a mile walk away.

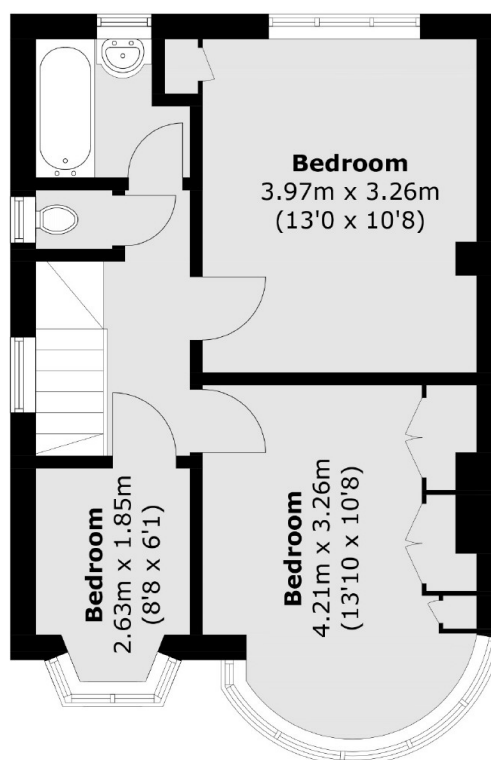
Features

- Three Bedrooms
- Two Reception Rooms
- Extension Potential
- Large Garden
- Garage
- No Onward Chain

Woodhouse Close, Greenford, UB6



First Floor



Second Floor

Total area (approx.): 80.0 sq. m (861.0 sq. ft)