



## Sutherland Road, W13

£575,000

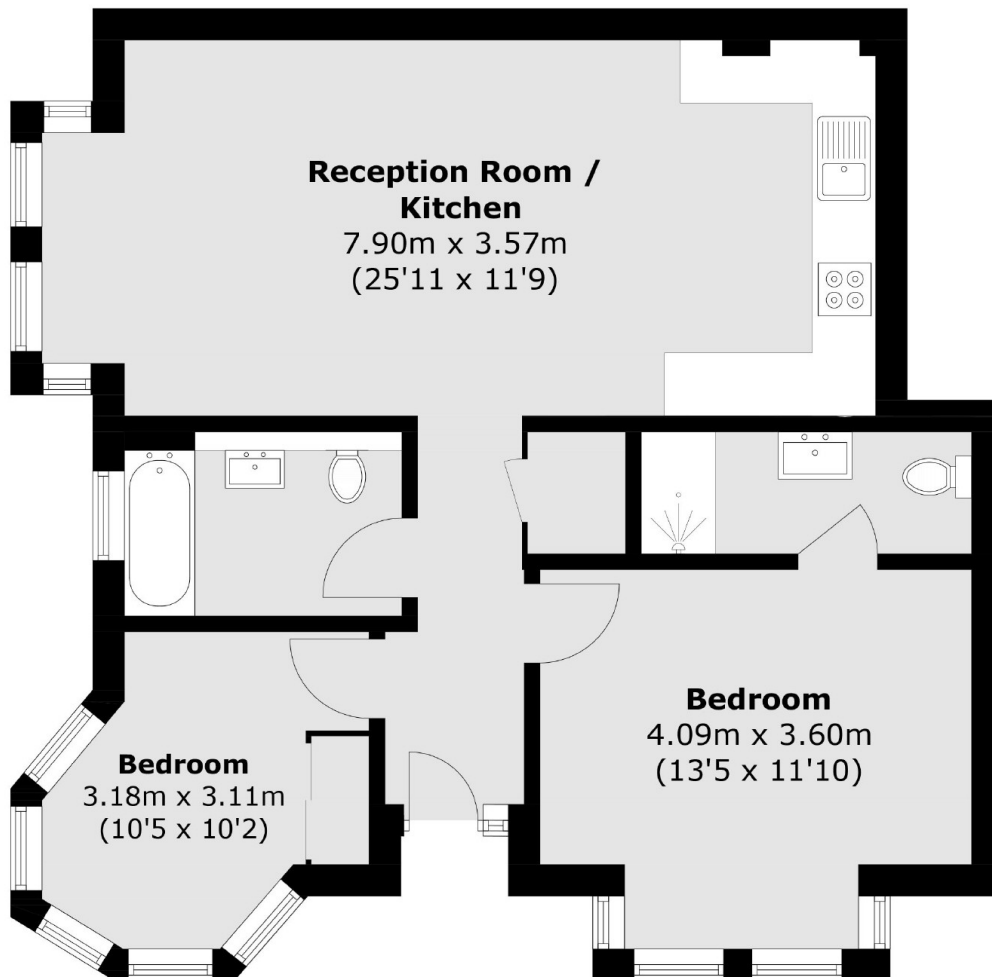
An immaculately presented two bedroom, two bathroom ground floor flat within walking distance of the West Ealing Elizabeth line station. The property includes a private garden, a share of the freehold and off street parking.

Sutherland Road is just 0.2 miles from the newly opened Elizabeth Line at West Ealing station, making this the perfect commuter spot. There is easy vehicular access into and out of London via the A40, along with plenty of local eateries and amenities.

### Features

- Two Bedrooms
- Two Bathrooms
- Private Garden
- Share of Freehold
- Off Street Parking
- Close to Transport

Sutherland Road,  
London, W13



Total area (approx.): 64.4 sq. m (693.2 sq. ft)

**Dexters**

Ealing  
2 New Ealing Broadway  
London  
W5 2NU  
Sales  
020 8810 0909

Energy Rating: . We aim to make our particulars both accurate and reliable. However they are not guaranteed; nor do they form part of an offer or contract. If you require clarification on any points then please contact us, especially if you're traveling some distance to view. Please note that appliances and heating systems have not been tested and therefore no warranties can be given as to their good working order.

 **RICS** | Regulated  
Estate Agent  
and Letting Agent

[dexters.co.uk](https://www.dexters.co.uk)